

HERITAGE

BATHROOMS

Installation Guide



Models Covered:

Concealed Cistern Frames

CFC36, CFC37

Please keep this booklet for future reference.

Installer: When you have read these instructions, please ensure you leave them with the user.

INTRODUCTION

Thank you for buying a Heritage Product. When you buy a Heritage product, you can be confident that it not only features a beautiful, distinctive, classic design, but that it has also been made to the very highest quality standards.

To ensure that it works to its full potential, it needs to be fitted correctly.

These fitting instructions have been created to give you all of the information you need and, if you need any further help, please do not hesitate to give us a call on: 0330 026 8503.

CONTENTS

SAFETY NOTES	3
PACK CONTENTS	4-6
DIMENSIONS (MM)	7
INSTALLATION	8-16
TROUBLESHOOTING	16
CARING FOR YOUR PRODUCT	17
GUARANTEE	17
NEED HELP?	17
NOTES	18-19



SAFETY NOTES

Please make sure you read these instructions and retain for future use.

All products manufactured by Heritage Bathrooms are safe, providing they are installed and used correctly and also receive maintenance when needed.

Toilets, including the connecting water and waste system need to be installed in accordance with and meet the requirements of the Water Supply Regulations 1999 (Water Fittings) and current by-laws. If you are in doubt about your ability to install this product correctly or safely, you should employ the services of an experienced qualified plumber.

This product must not be modified in any way otherwise this will invalidate the guarantee.

Check the pack contents to ensure the product is complete and all components for any signs of damage, If components are damaged, stop the installation and contact our Customer Services department on 0330 026 8503 for replacements.

It is the installer's responsibility to carry out a thorough assessment of the installation environment (i.e. wall type/structure) and use appropriate fixings

Consider the following whilst using power tools:

- Prior to drilling into walls, check there are no hidden electrical cables or wires and there are also no water pipes. These can potentially be found using an electrical or metal detector. You may also need to know some of the schematics of previous installations to determine the suitability and accommodation of the installation.
- Wear the correct PPE, especially ear, eye and hand protection when using power tools. Unplug any mains equipment after use.
- Keep electrical equipment away from sources of water.
- If a blow-lamp is used when plumbing, the flame must be kept well away from the product otherwise damage may occur.

Prior to completing the installation of a toilet, you will need to plan for the water supply and soil pipe position. It is advisable to fit the first fix section of your water inlet, this is the pipework leading to the cistern, including an isolation valve. In general the inlet size of a cistern is a 1/2" BSP connection.

There are many different pan connectors available to suit different toilet positions.

Note: It is the responsibility of the installer to select a suitable pan connector for your installation, based on the toilet being positioned correctly according to the flush pipework and cistern.



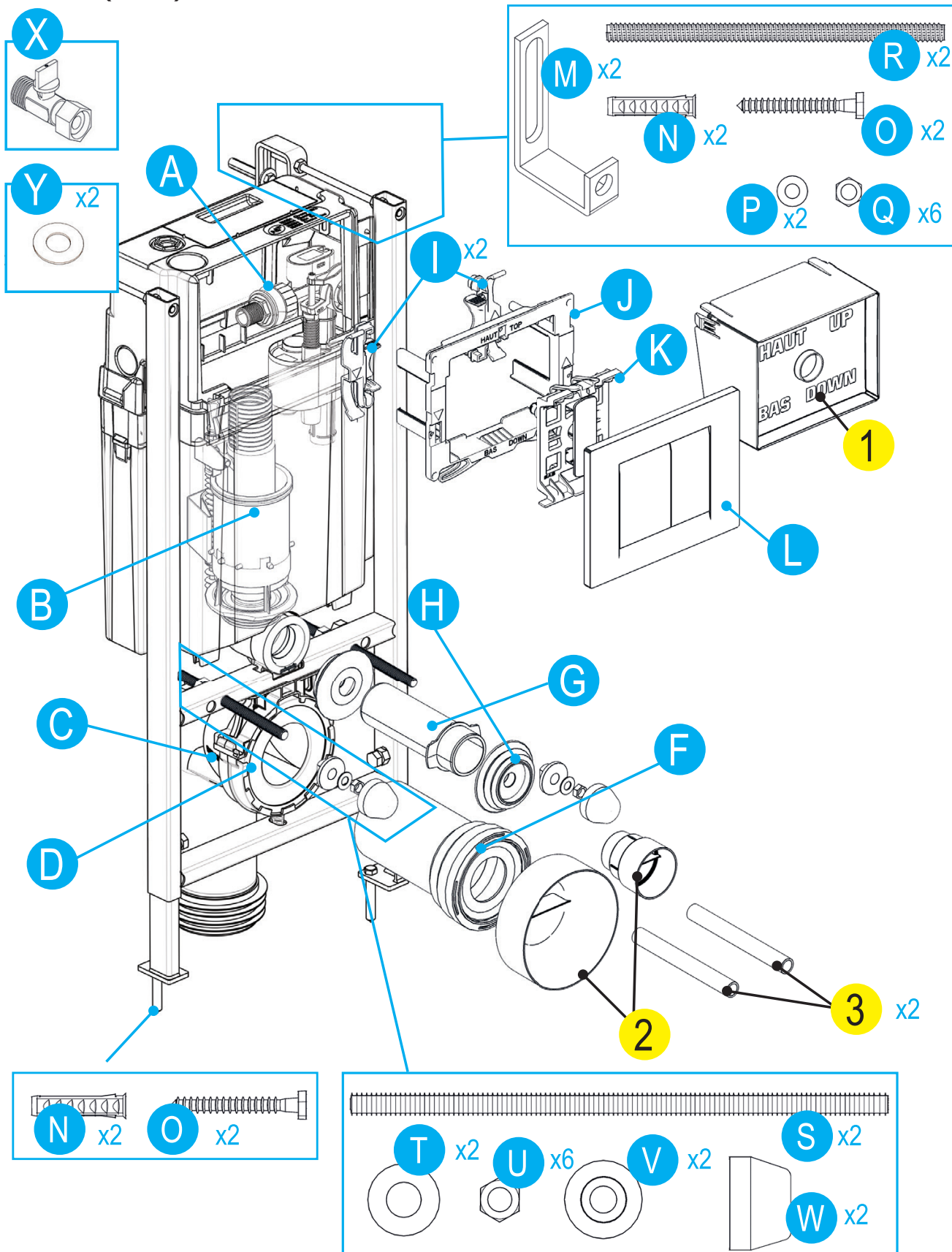
PACK CONTENTS

PART NO	DESCRIPTION	CFC36 QTY	CFC37 QTY
A	Inlet Valve	1	1
B	Flush Valve	1	1
C	90 WC Pan Connector	1	1
D	WC Pan Connector Bracket	1	1
F	Straight WC Pan Connector	1	1
G	Flushpipe	1	1
H	Flushpipe Bungs	1	2
I	Push Plate Clips	2	2
J	Push Plate Bracket	1	1
K	Push Plate Cable Connector	1	1
L	Chrome Push Plate	1	1
M	Wall Brackets	2	2
N	Wall & Floor Plugs	4	4
O	Wall & Floor Screws	4	4
P	Washers	2	2
Q	Nuts	6	6
R	Wall Fixing Threaded Bar	2	2
S	Pan Fixing Threaded Bar	2	2
T	Washers	2	2
U	Nuts	6	6
V	Pan Fixing Sleeve	2	2
W	Pan Fixing Cover Cap	2	2
X	Isolation Valve	1	1
Y	Isolation Valve Fibre Washers	2	2
1*	Cistern Cover	1	1
2*	WC Pan Connector & Flushpipe Cover	2	2
3*	Pan Fixing Threaded Bar Sleeves	2	2
* For use during First Fix			



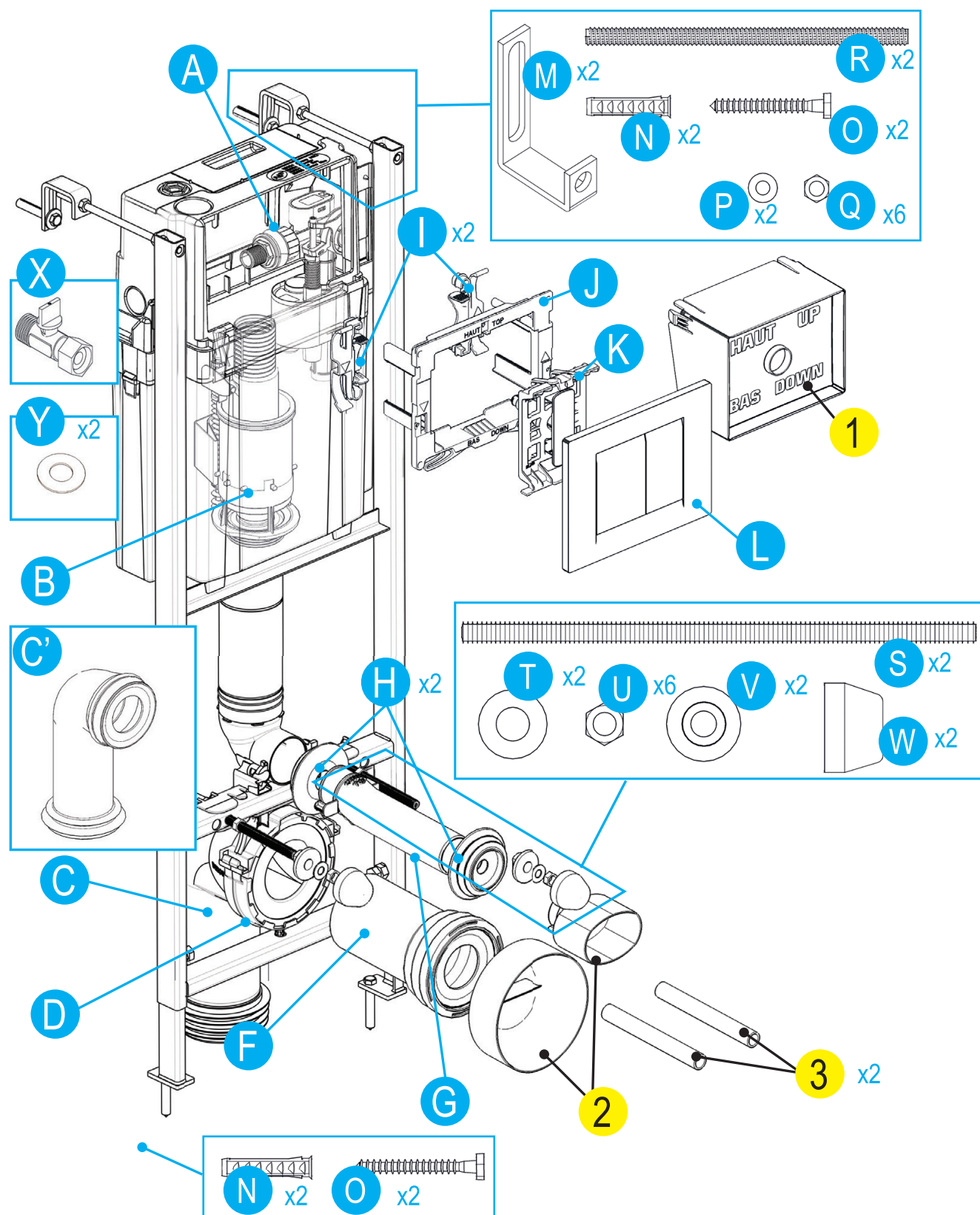
PACK CONTENTS

CFC36 (0.8m)

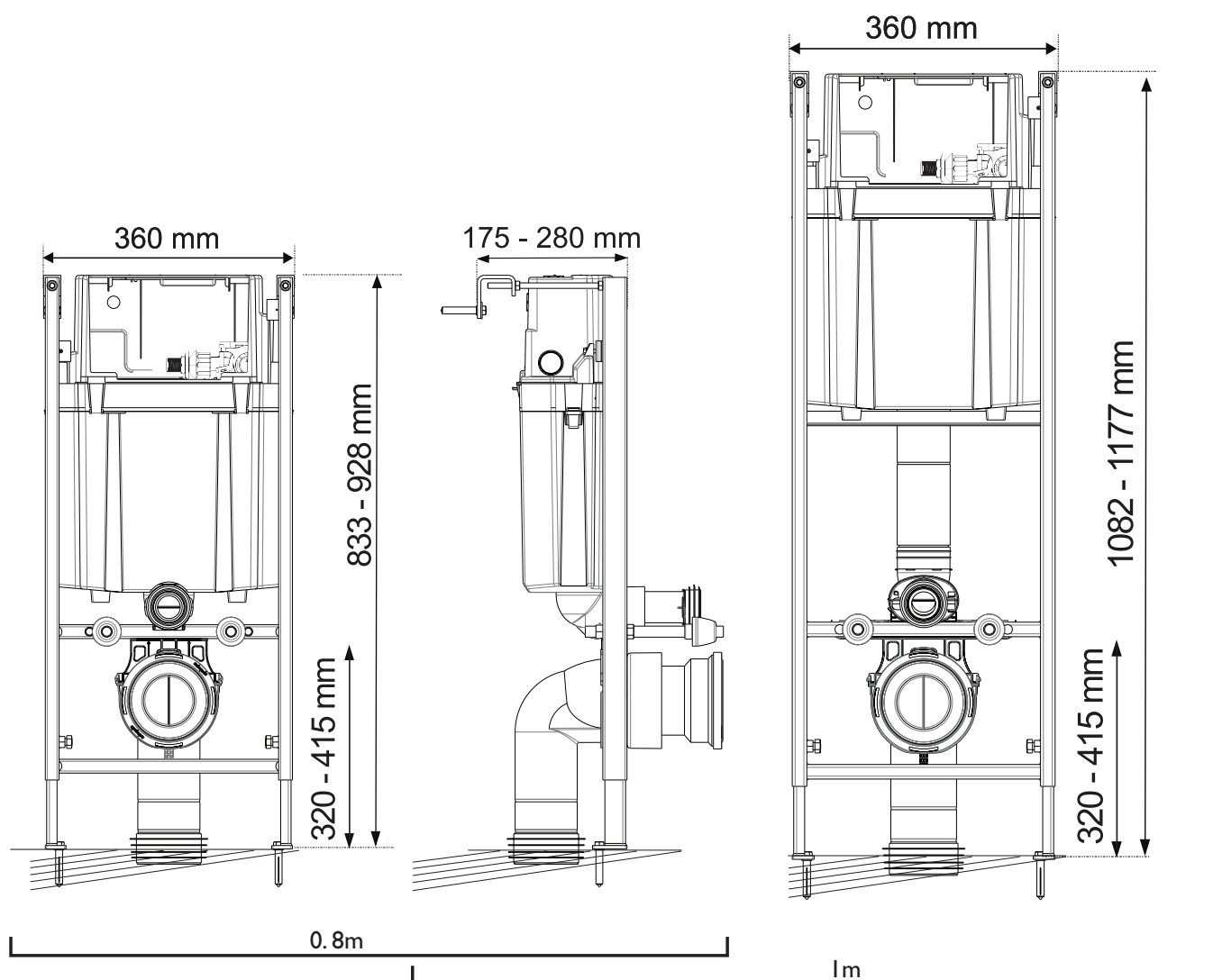


PACK CONTENTS

CFC37 (1m)

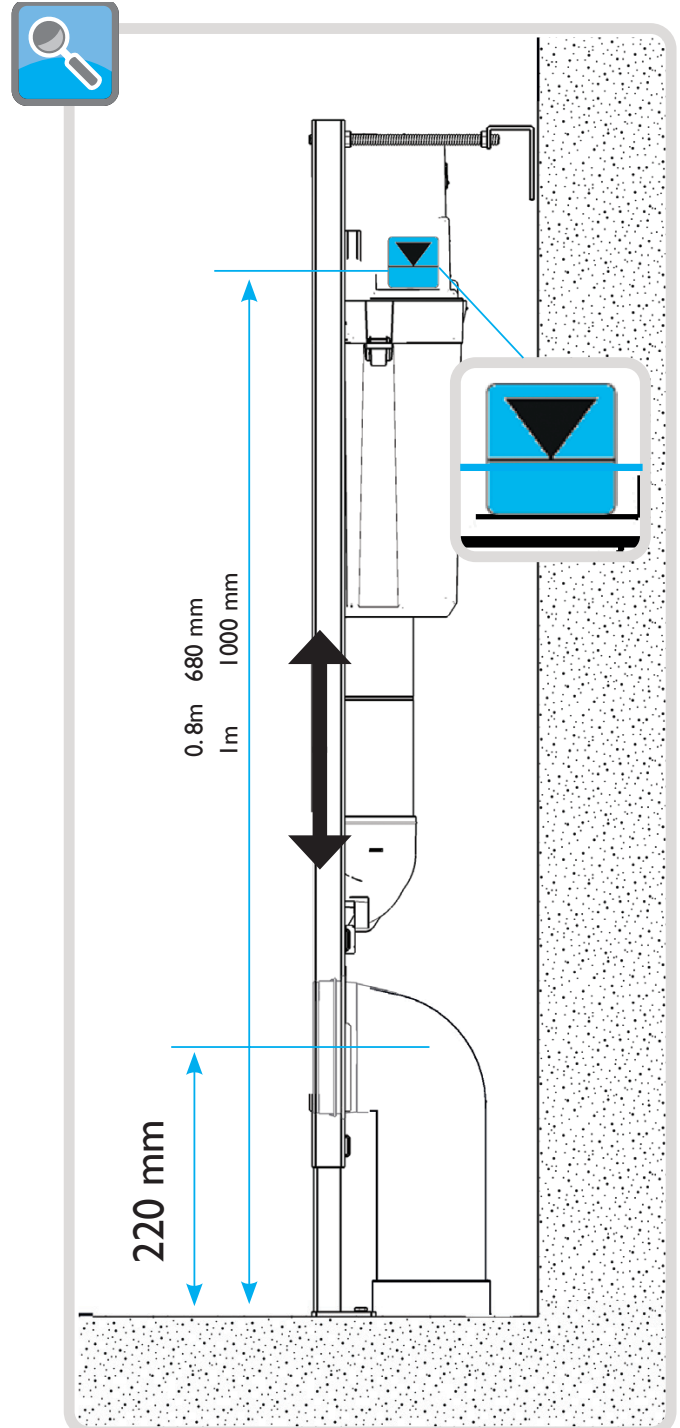
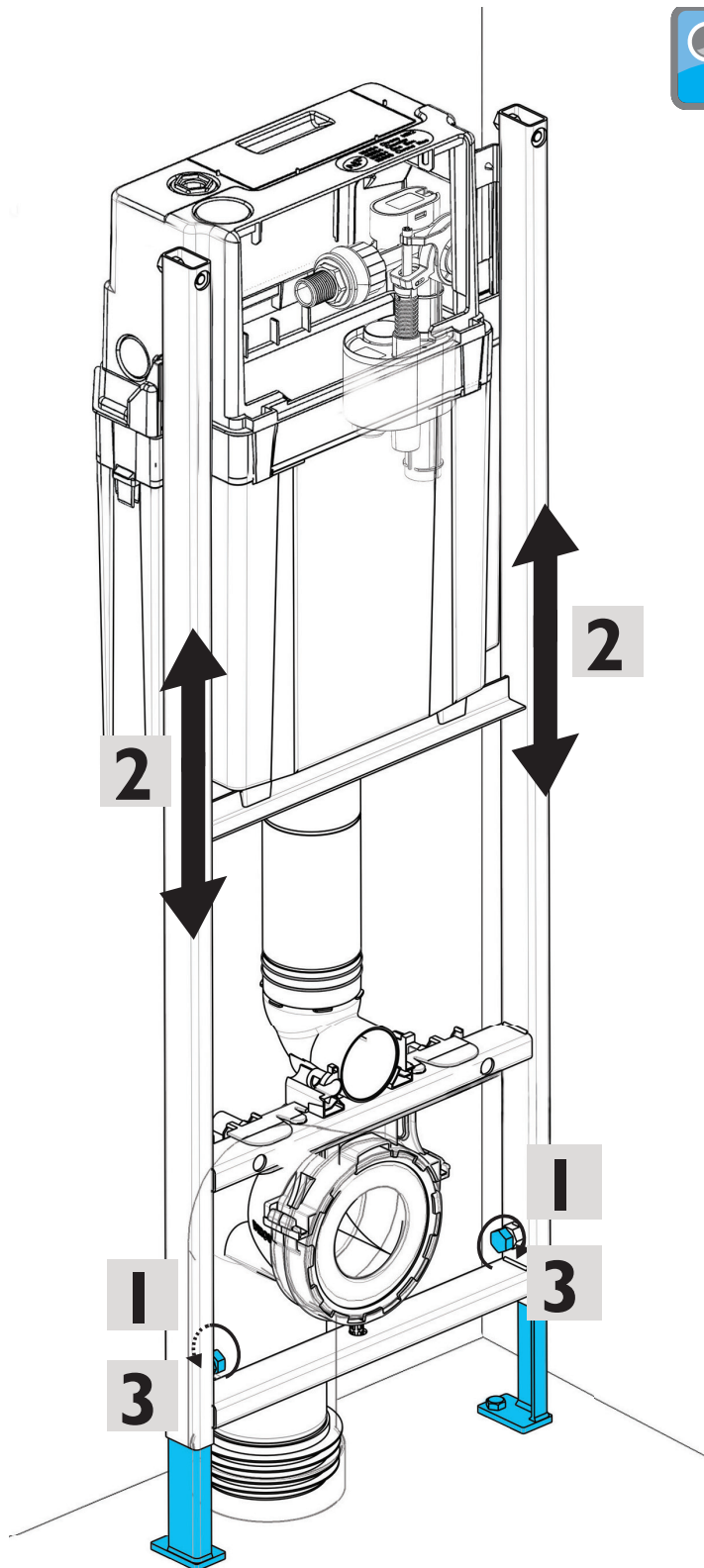


DIMENSIONS (MM)



INSTALLATION

HEIGHT ADJUSTMENT



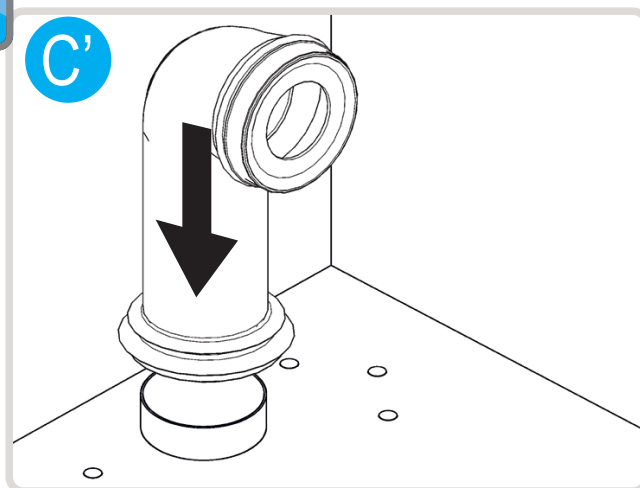
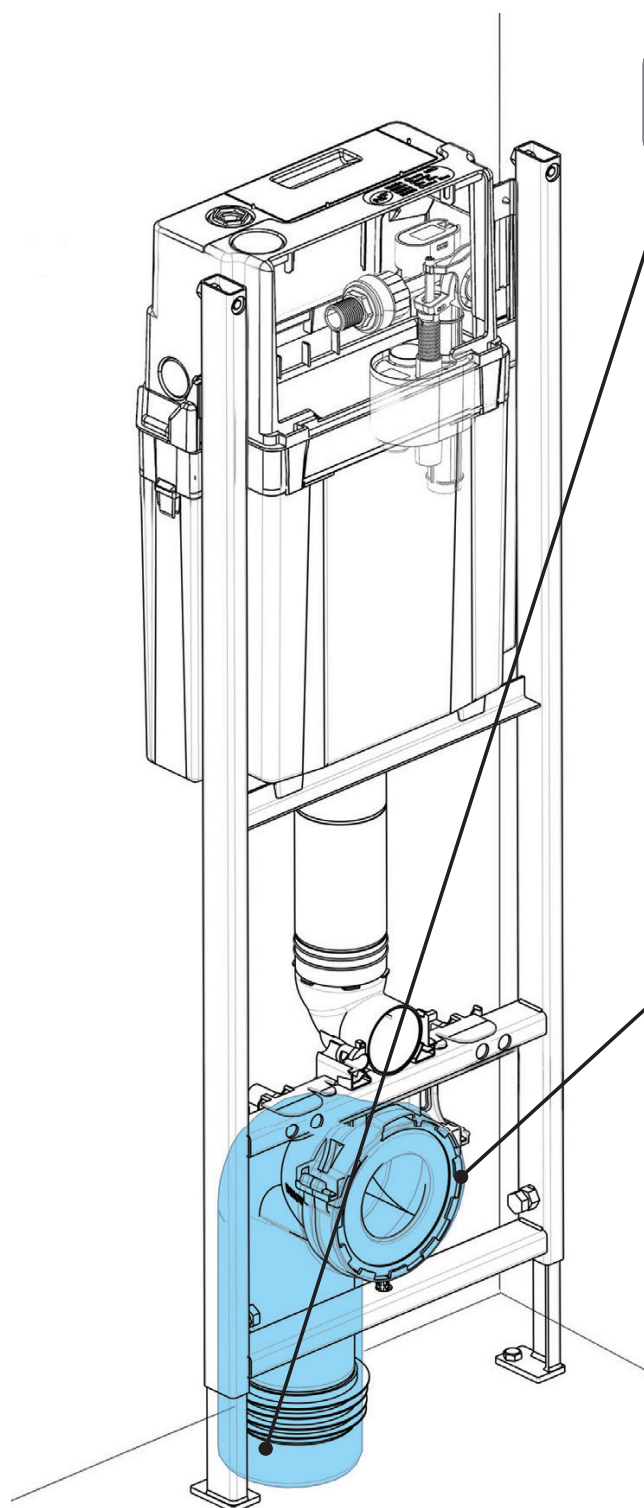
Adjust the height of the concealed cistern to suit the installation location.

Refer to the dimensions page to see the ranges available.

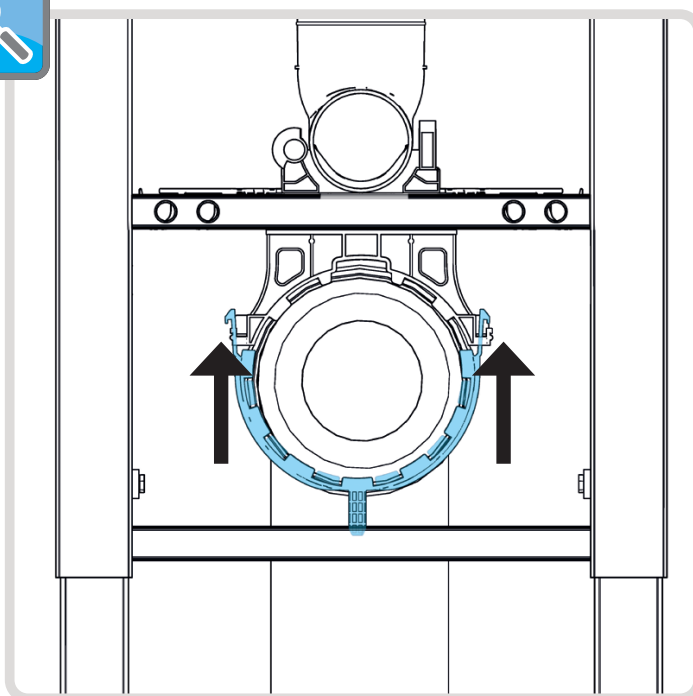


INSTALLATION

PAN CONNECTOR



Install your chosen pan connector on to the frame. Secure the pan connector into the bracket.



INSTALLATION

SECURE THE FRAME

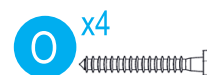
Use the fixings to secure the frame to the floor and wall.



M x2



R x2



O x4



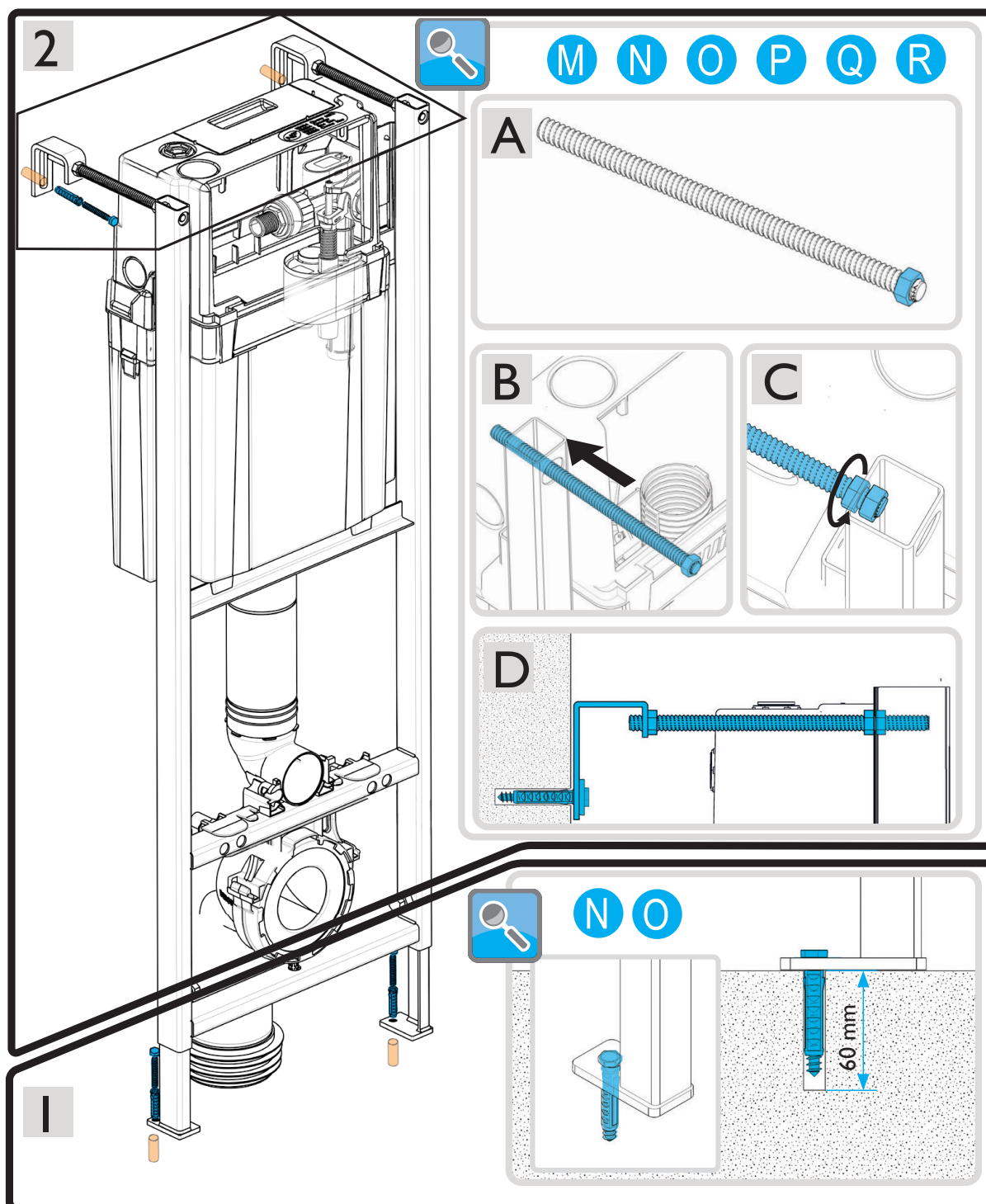
N x4



P x2



Q x1



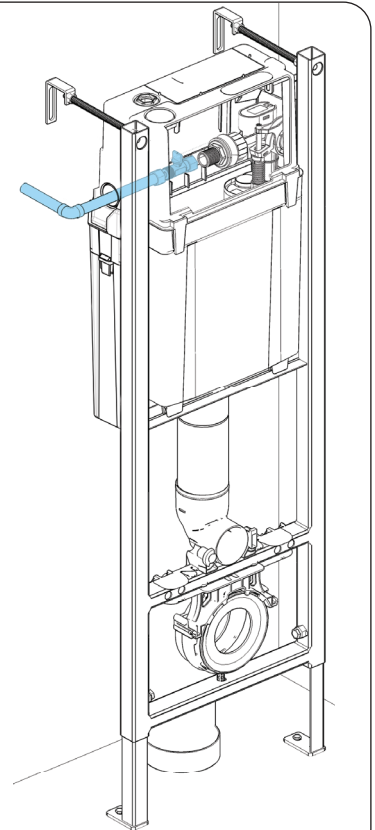
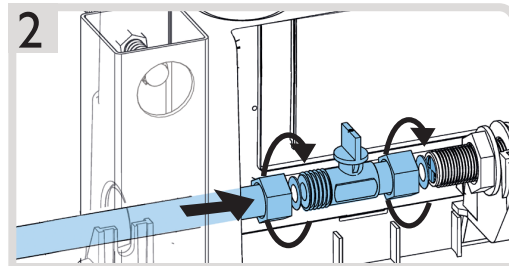
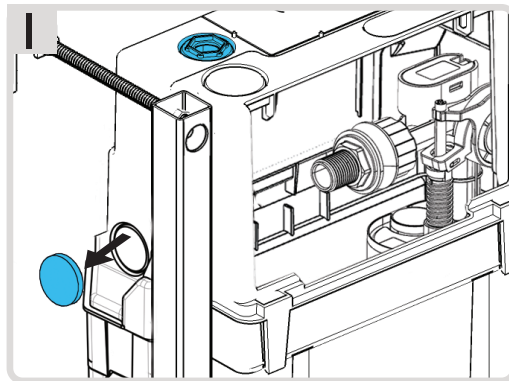
INSTALLATION

WATER FEED

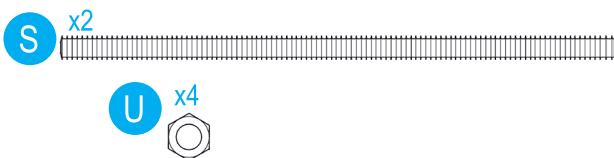


The water feed can be positioned either top, back or side.

A filter is fitted as standard and is suitable for water pressures from 0.2 to 10 bar. Ensure the filter is fitted in the tail of the inlet valve.



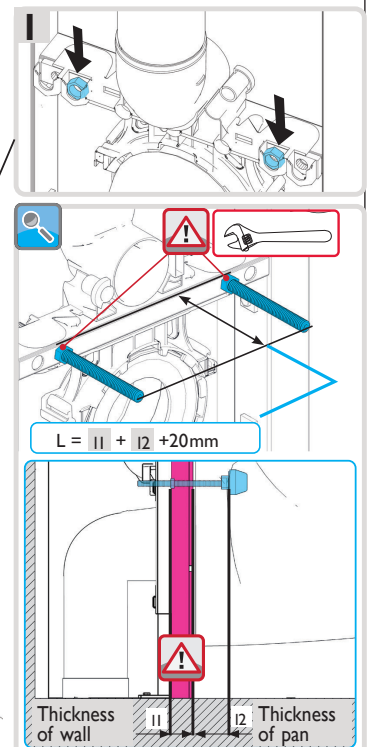
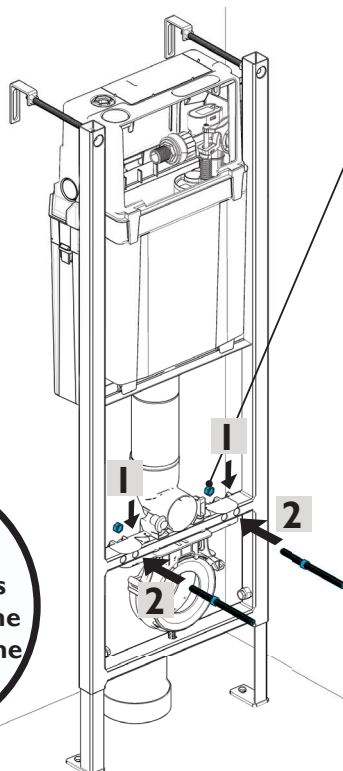
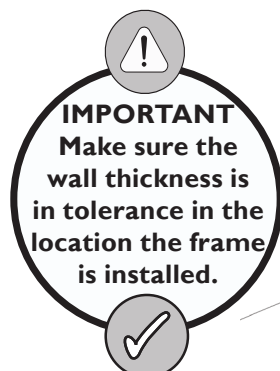
WC PAN FIXINGS



Define the required WC pan centres (180mm or 230mm) by measuring the distance on the back of your pan.

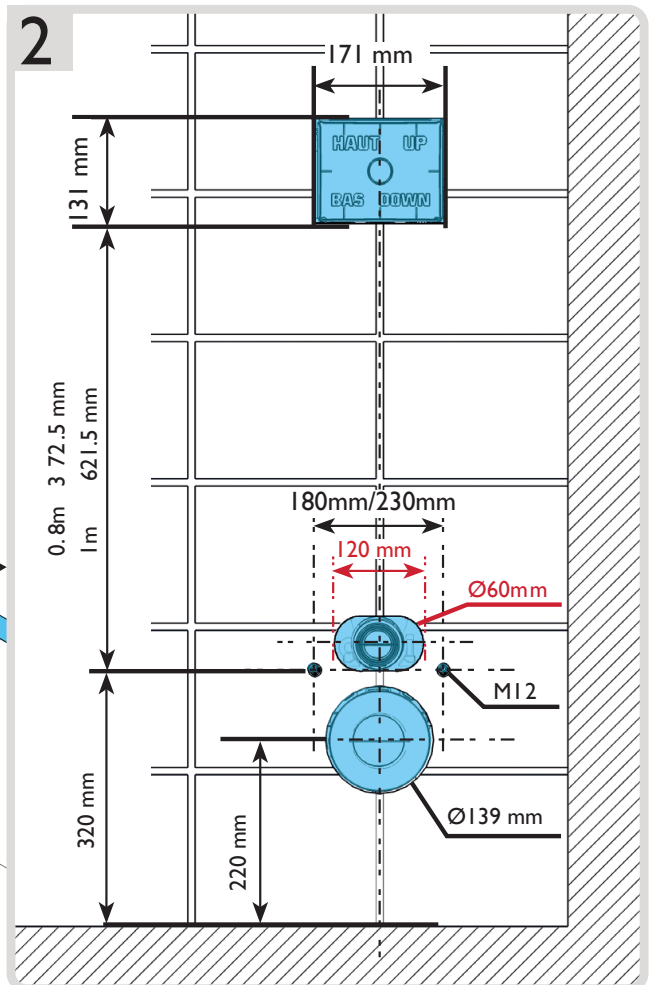
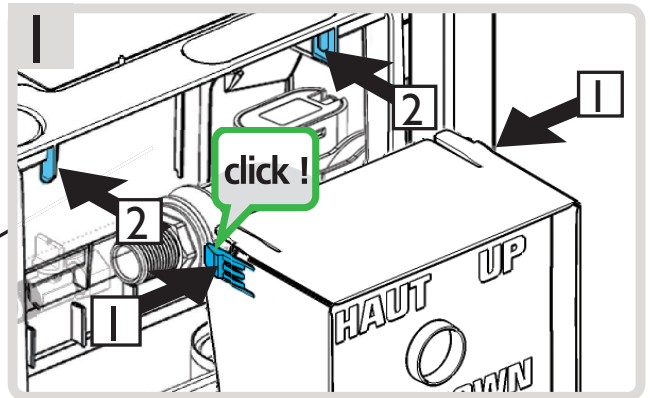
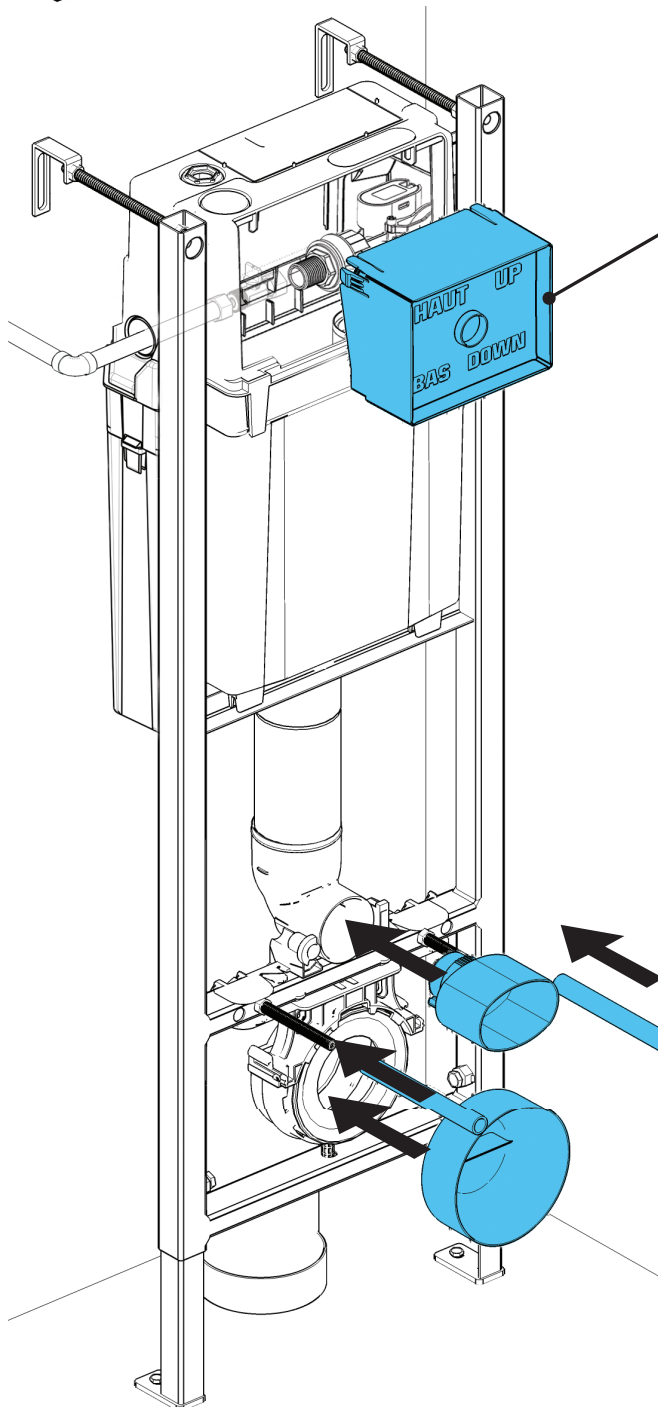
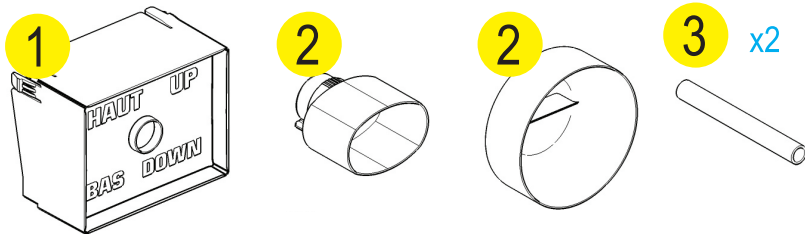
MAXIMUM WALL THICKNESS

CFC36 - 50mm
CFC37 - 60mm



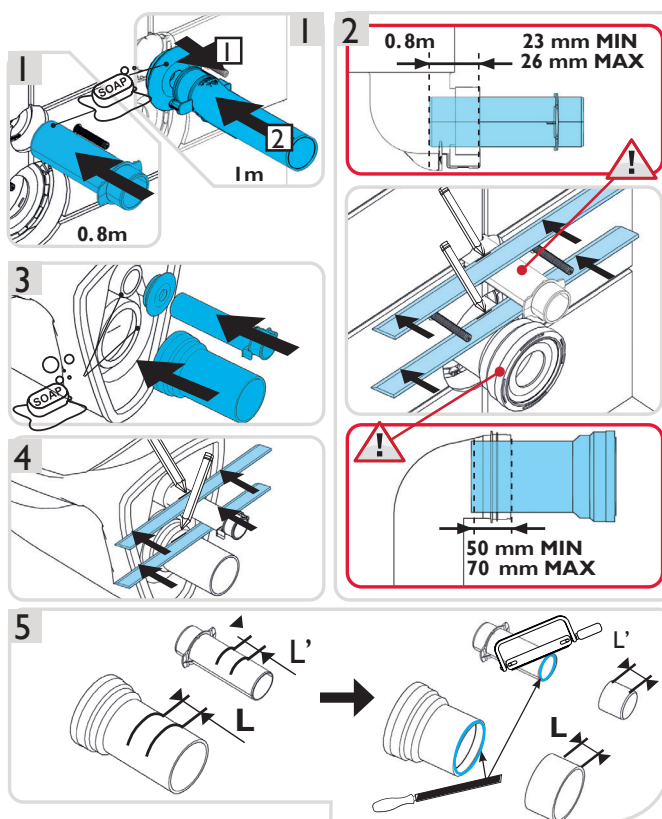
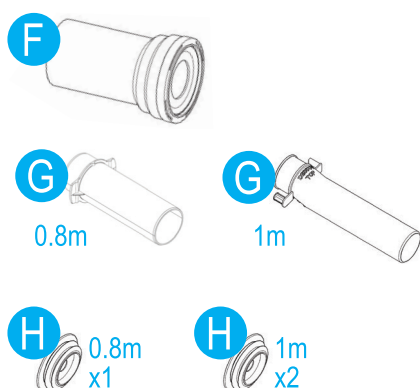
INSTALLATION

FIRST FIX

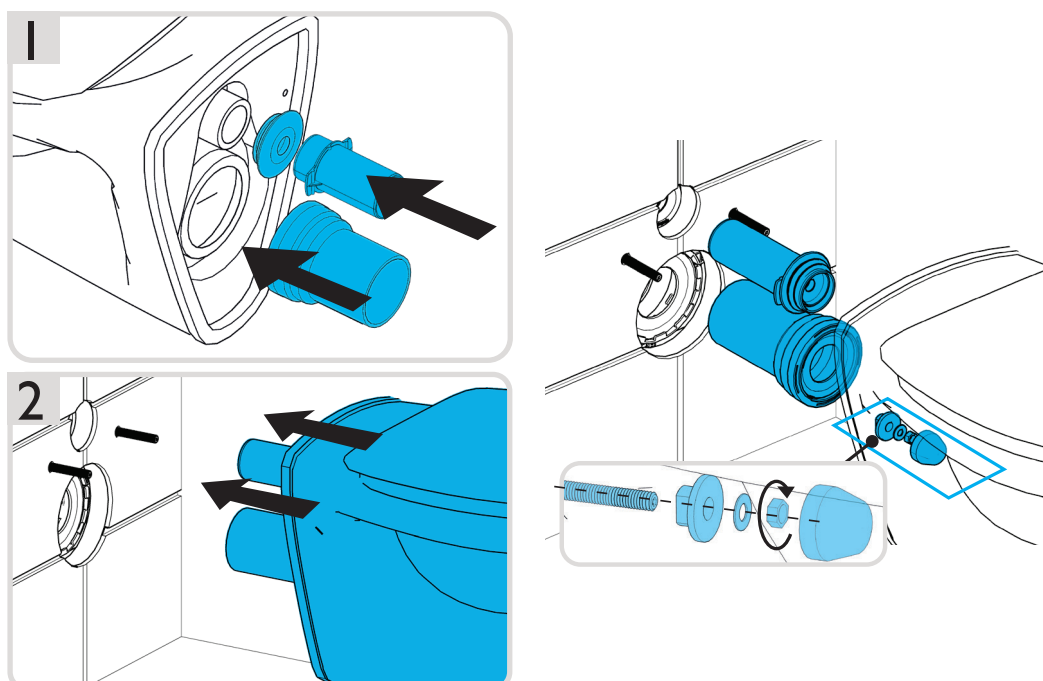
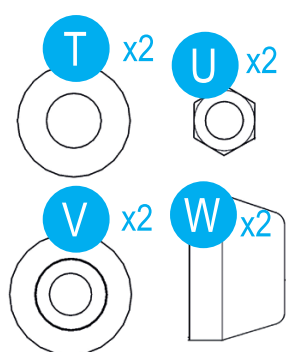


INSTALLATION

FLUSH PIPE

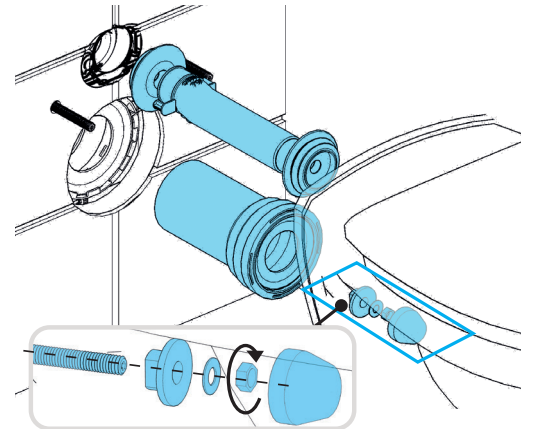
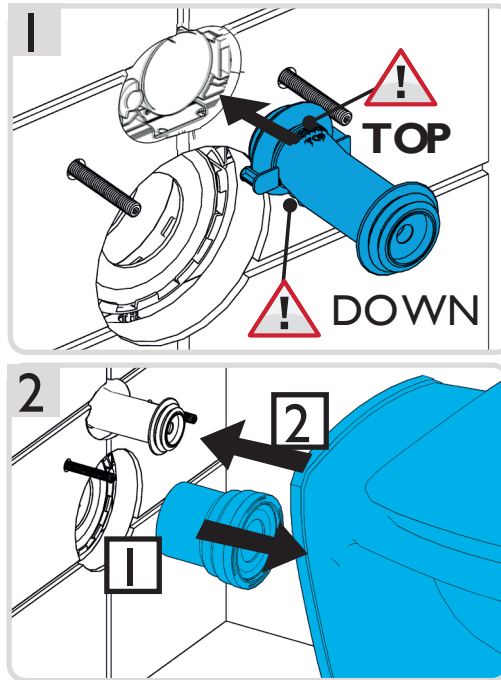
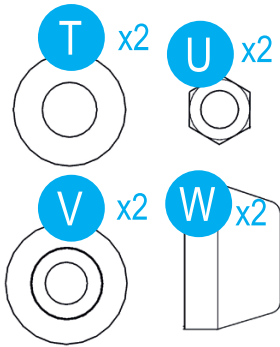


CFC36 - PAN INSTALLATION



INSTALLATION

CFC37 - PAN INSTALLATION



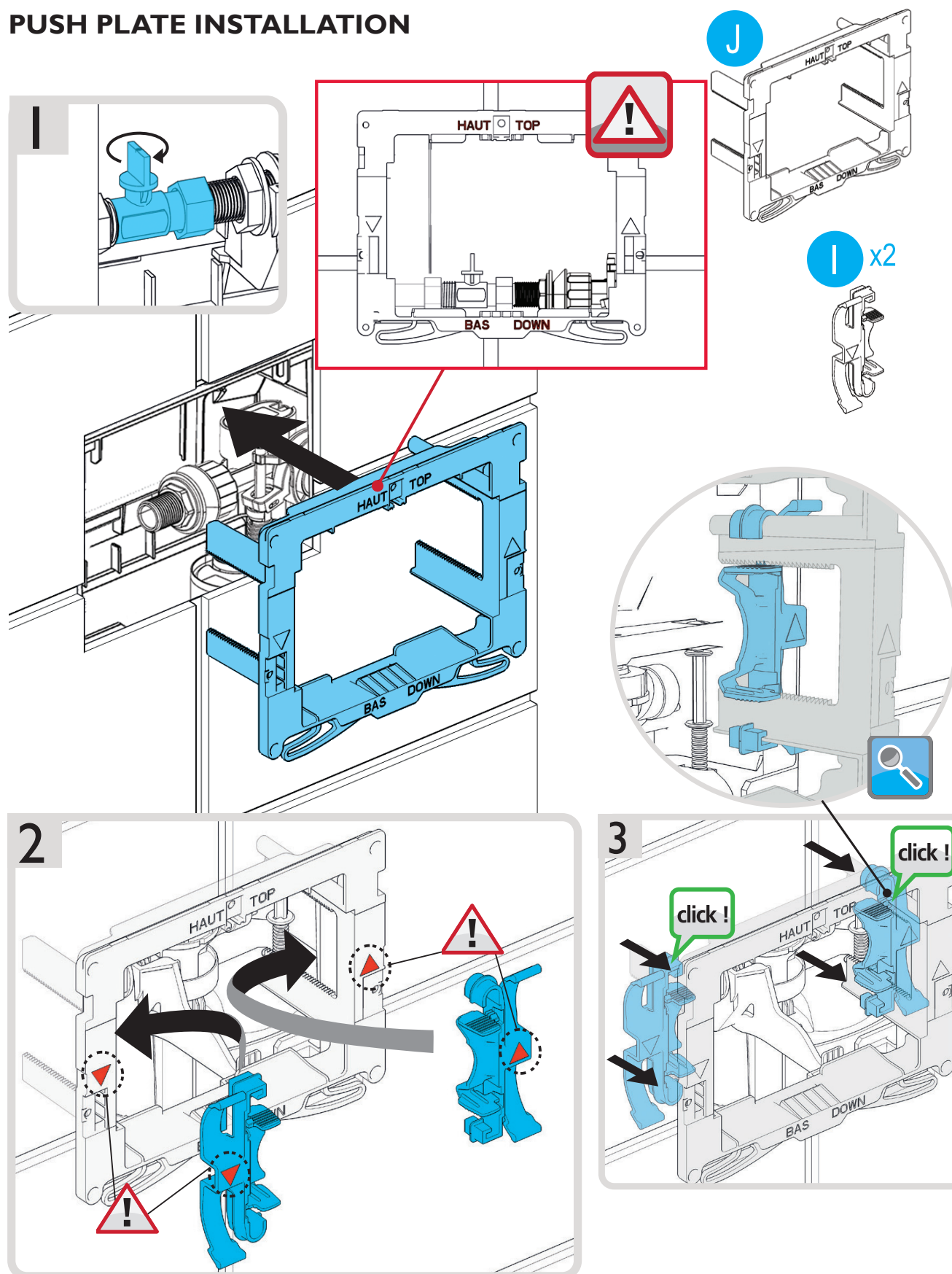
COMMISSIONING

- Allow the cistern to fill and check thoroughly for leaks around the toilet, cistern, water inlet, flush pipe and waste connections.
- Allow the cistern to fill and check that the inlet valve shuts off on the water line indicated inside the cistern. If adjustment is needed, move the float up (clockwise) or down (anti clockwise) by rotating the adjusting rod as required until the inlet shuts off on the water line indicated.
- Hold the adjusting rod down to cause the cistern to internally overflow. Ensure that the overflow can discharge the incoming water. If necessary, reduce the incoming water flow by partially closing the isolation valve.



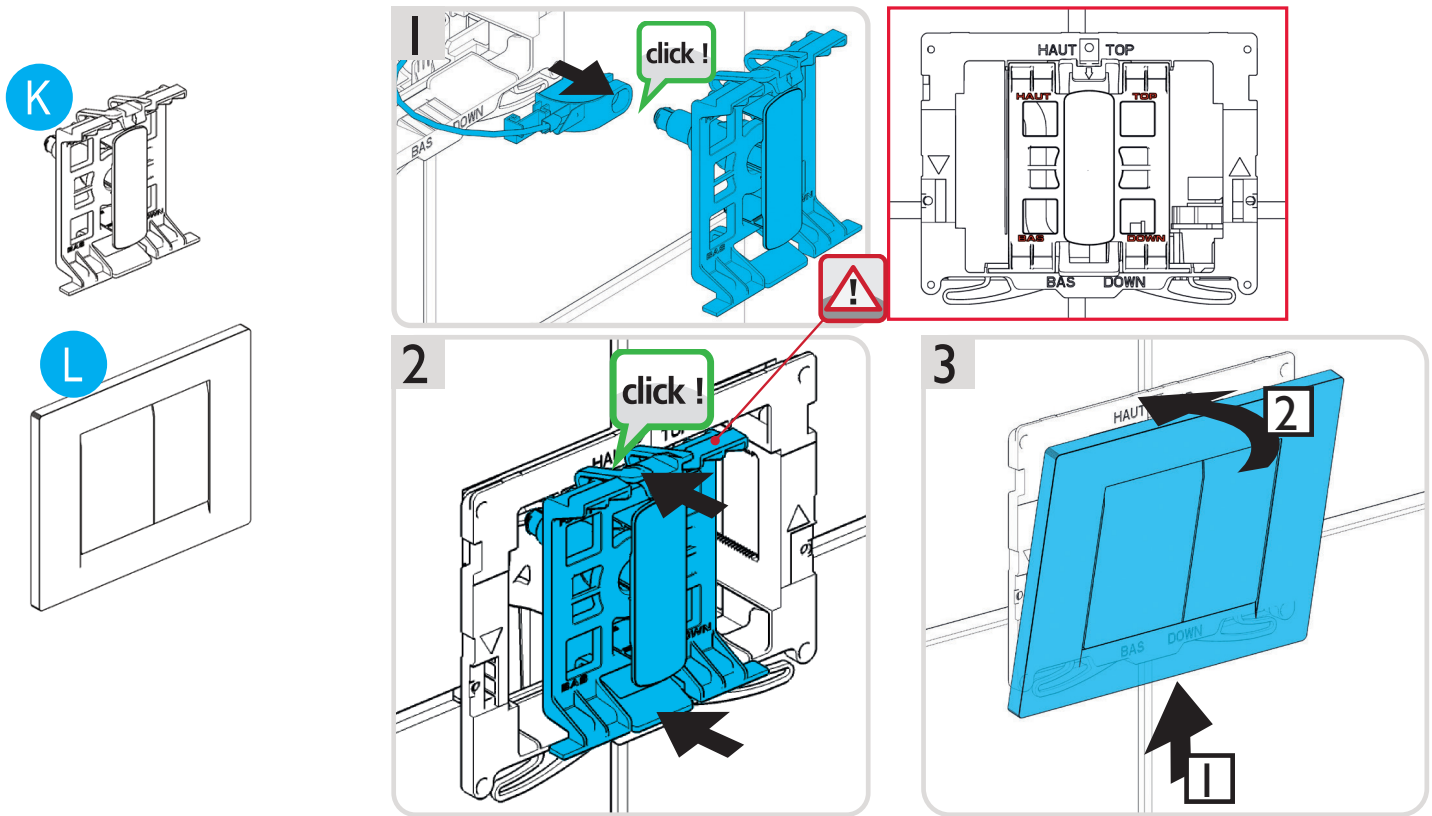
INSTALLATION

PUSH PLATE INSTALLATION



INSTALLATION

PUSH PLATE INSTALLATION



TROUBLESHOOTING

THE INLET VALVE WILL NOT LET WATER INTO THE CISTERN:

- Check the water supply and isolation valve are turned on
- Make sure the inlet valve float has free movement and is not in the shut off position
- Check the inlet valve filter for debris and rinse with clean water.
- The filter can be removed from the tail of the inlet valve with pliers.

THE INLET VALVE WILL NOT SHUT OFF:

- Make sure the inlet valve float has free movement and is not jammed.
- Check the inlet valve filter for debris and rinse with clean water.
- The filter can be removed from the tail of the inlet valve with pliers.

THE CISTERN IS FILLING TOO QUICKLY:

- Ensure the filter is fitted in the tail of the inlet valve.
- Reduce the incoming water flow by partially closing the isolation valve.

THE FLUSHING VALVE KEEPS RUNNING/ FLUSHING:

- Ensure the route of the cable is not kinked



CARING FOR YOUR PRODUCT

Heritage products are made from premium materials, with hand polished, PVD, EPD or electroplated finishes.

Your product should be regularly cleaned with warm water, a mild pH-neutral liquid soap, and polished with a soft cloth. Any residues from soap, toiletries etc. should be rinsed off straight after use.

Household bleaches and cleaners contain harsh chemicals and may damage the surface finish. Avoid using abrasive cloths, scouring pads, scrub sponges, steel wool or anything similar.

Some surfaces such as nickel and pewter may be affected by the dye found in some cloths, so it is also important to avoid leaving cloths on surfaces.

GUARANTEE

The confidence we have in the quality of our products and services enables us to offer a free peace-of-mind product guarantee from 2 years up to a lifetime guarantee against any manufacturing faults, with proof of purchase. In addition, our attentive customer service team are available to help solve any problems which may arise quickly and effectively so you can enjoy your bathroom.

To see the specific guarantee for this product, scan the QR Code or visit the following URL:

<https://www.heritagebathrooms.com/service-centre/guarantee>



NEED HELP?

If your product does not function correctly when you first use it, contact your plumber and make sure that it has been installed and commissioned in line with this Installation and User Guide supplied with the product. If this doesn't solve the problem, then please visit <https://www.heritagebathrooms.com/service-centre/help-and-advice> for some helpful hints and tips; or contact Heritage Customer Service on 0330 026 8503 where our expert team of advisors will be able to offer you, or your plumber, help and advice.



NOTES



NOTES



HERITAGE[®]

BATHROOMS

We love to see how Heritage products are used so please keep in touch and share pictures of your new bathroom with us.



@heritagebathrooms

If you have any queries, our dedicated customer service teams and products experts are available to help.

Email us enquire@heritagebathrooms.com Call us **0330 026 8503** Website www.heritagebathrooms.com

UK: Heritage Bathrooms, Pooley Hall Drive, Birch Coppice Business Park, Dordon, Tamworth B78 1SG

EU: Masco Europe S.à.r.l., 14 Rue Strachen, 6933 Mensdorf, Luxembourg.