

HERITAGE

BATHROOMS

Installation Instructions & User Guide

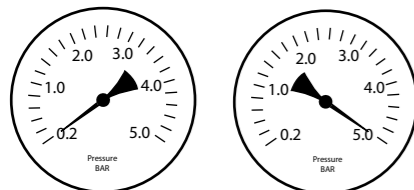
Please leave these instructions with the end user

Product Code: STRCDUAL02 (DI)

Specifications

Working Pressures

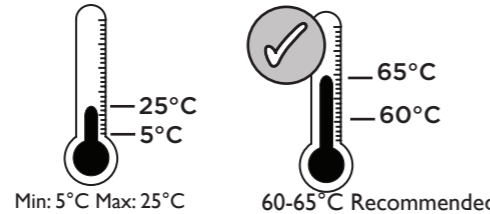
Min: 0.2 bar Max: 5.0 bar



Maximum Static Pressure: 10.0 bar

Inlet Water Temperature

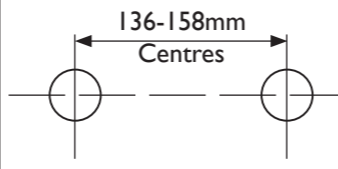
Cold Water Supply Hot Water Supply



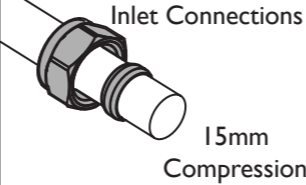
Factory pre-set 42°C

IMPORTANT
The inlet hot water must be at least 10°C above the required blend temperature.

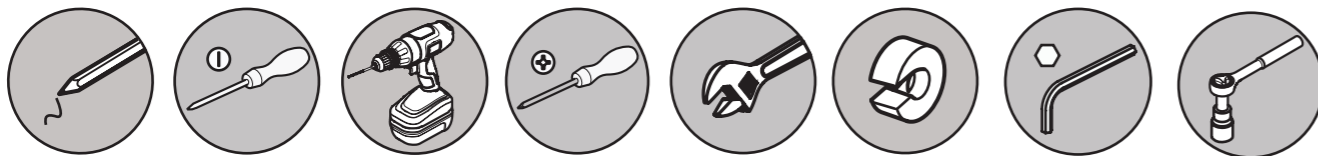
Inlet Dimensions



Inlet Connections



Tools You'll Need



Prior to Installation

All products manufactured and supplied by Heritage Bathrooms are safe to use provided that they are installed, operated and receive regular maintenance in accordance with these instructions.

This product needs to be installed in accordance with, and meet the requirements of the Water Supply (Water Fittings) Regulations 1999 and current by-laws. For full Installation Requirements & Notes (IRN) please visit wras.co.uk/directory.

Isolation valves must be fitted to the inlet water supplies to ensure ease of future maintenance. Before installing this product the water supply must be thoroughly flushed in order to remove any swarf, solder etc. Full access must be made available for future maintenance/ servicing purposes.

Before drilling into walls, check that there are no hidden electrical wires, cables or water supply pipes. This can be checked with the aid of an electronic detector.

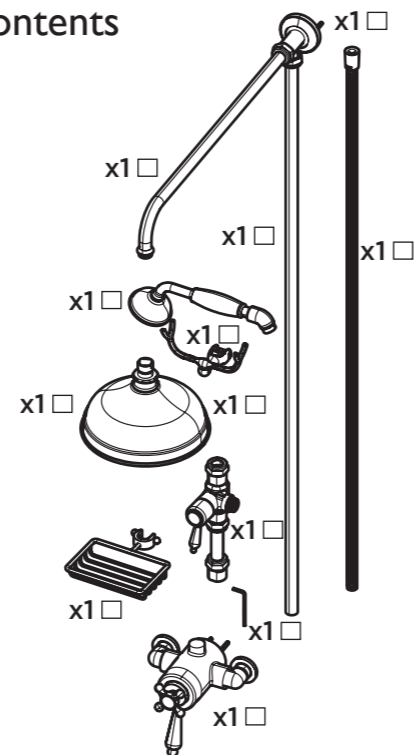
If power tools are used do not forget to:
- Wear eye protection
- Unplug equipment after use

This product must not be modified in any way as this will invalidate the guarantee.

If in doubt, contact a registered plumber, your Local Water Authority or the Secretary of the Institute of Plumbing, address as follows:-

The Institute of Plumbing,
64 Station Lane,
Hornchurch,
Essex,
RM12 6NB, Tel: 01708 472791

Pack Contents

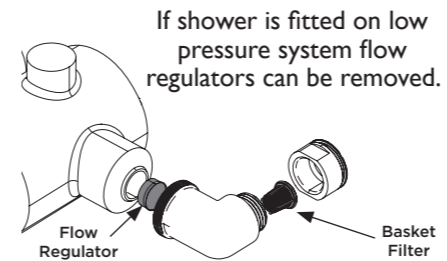


Spare Parts

www.heritagebathrooms.com/spares

Installation

1 Prior to installation - please fit the supplied basket filter into the inlets.

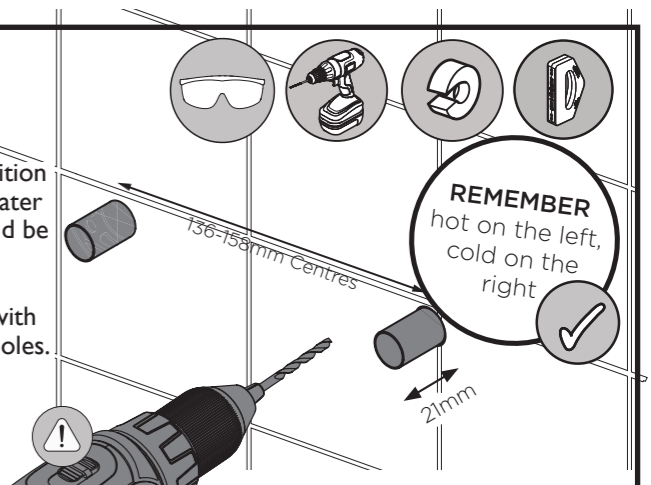


If shower is fitted on low pressure system flow regulators can be removed.

2

Identify the required position of the valve and prepare the water supply pipes. Supply pipes should be 136-158mm apart.

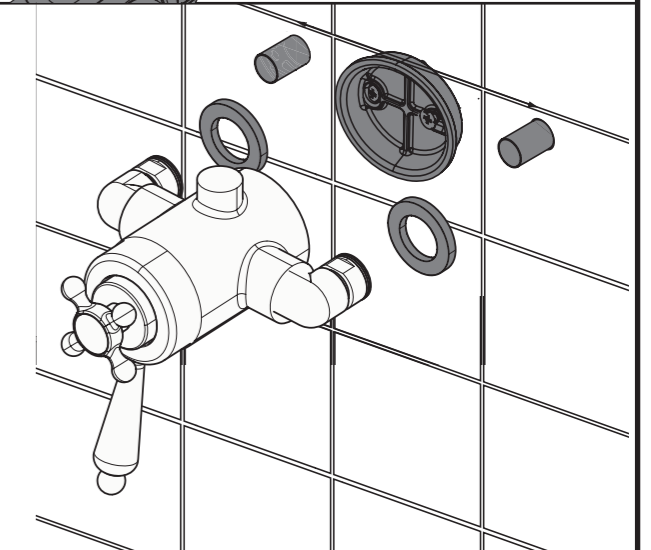
Using the backplate supplied with the wallmount, mark and drill holes.



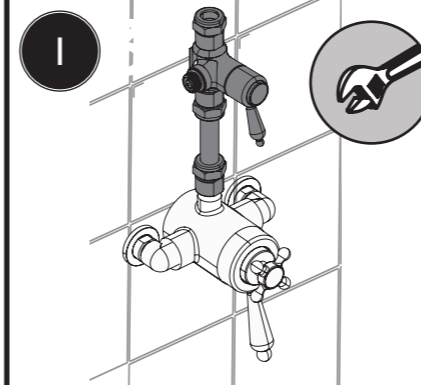
3

Place the shrouds, nuts and olives over the water supply pipes.

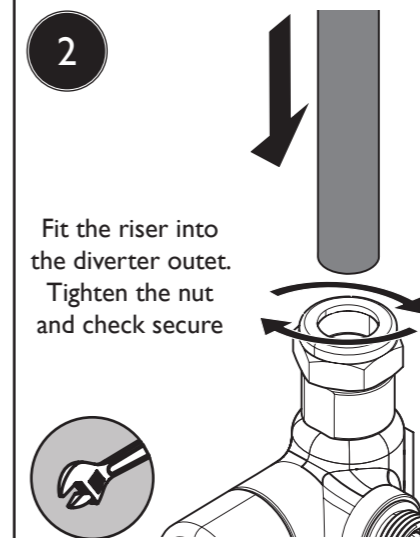
Fit the shower valve onto the backplate, inserting the hot and cold water supply pipes into the inlet connections and tighten the nuts. Ensure the olives are fitted to the water supply pipes.



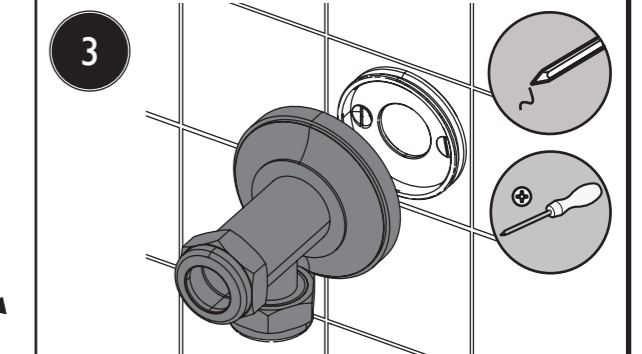
Installing Diverter and Shower Kit



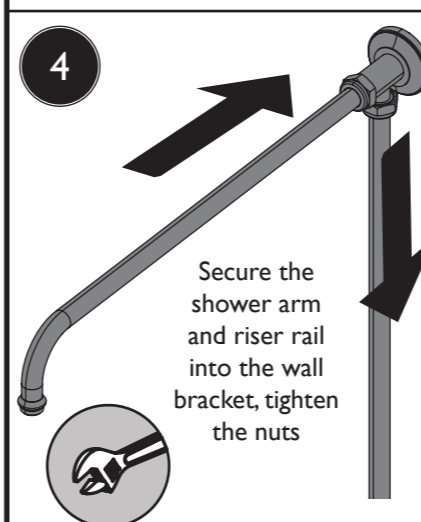
1 Fit the diverter to the top outlet, tightening the backnut fully



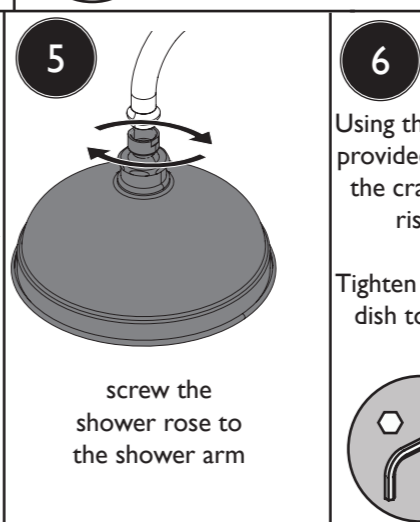
2 Fit the riser into the diverter outlet. Tighten the nut and check secure



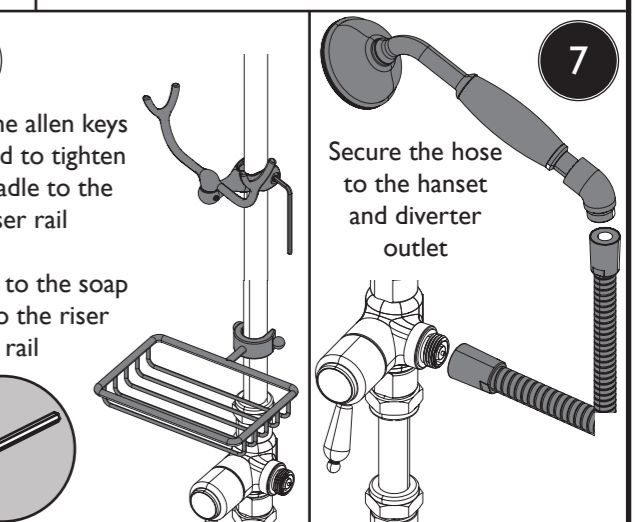
3 Remove the wall bracket fixing. Secure the wall bracket to the wall surface using the fixings supplied.



4 Secure the shower arm and riser rail into the wall bracket, tighten the nuts



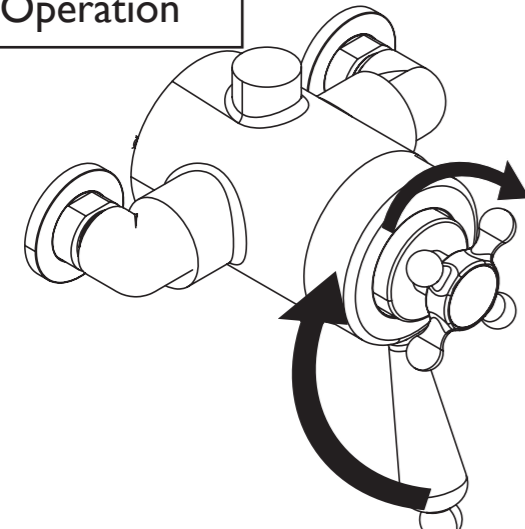
5 screw the shower rose to the shower arm



6 Using the allen keys provided to tighten the cradle to the riser rail
Tighten to the soap dish to the riser rail

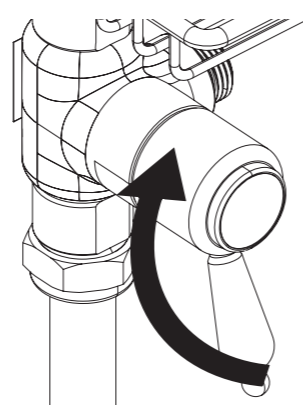
7 Secure the hose to the handset and diverter outlet

Operation



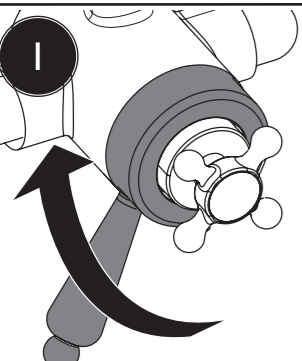
Turn the flow lever clockwise to turn on the flow of water.
The further the handle is turned the greater the flow of water.

Turn the temperature lever clockwise to increase the water temperature.
The further the handle is turned the hotter the water temperature.

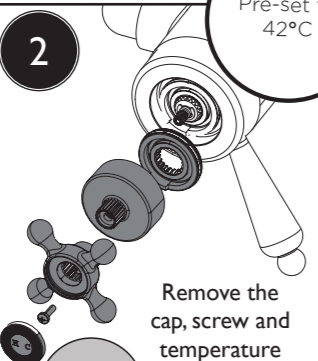


Turn the diverter lever clockwise to divert to fixed and anti-clockwise to use handset

Temperature Setting

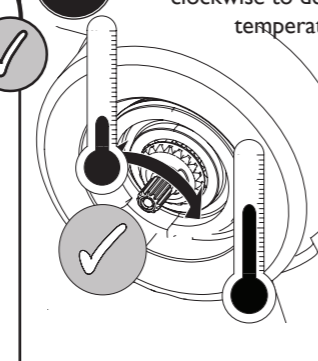


1 Turn the shower on, letting the temperature stabilise.




2 Remove the cap, screw and temperature handle.

Pre-set to 42°C

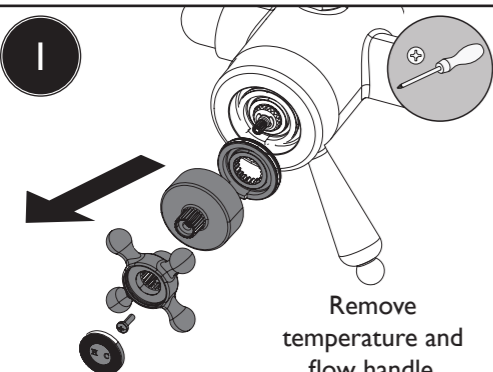


3 Turn the cartridge spindle anti-clockwise to decrease the temperature.
Turn the cartridge spindle clockwise to increase the temperature.

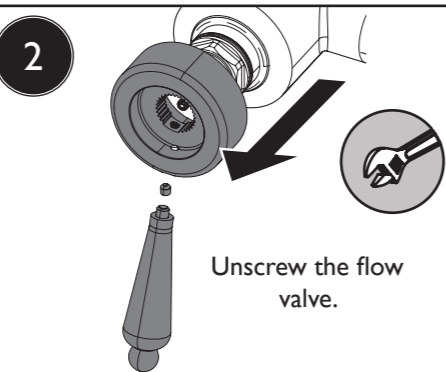


Reverse steps 1-2 to reinstall the valve, cartridge and handles.

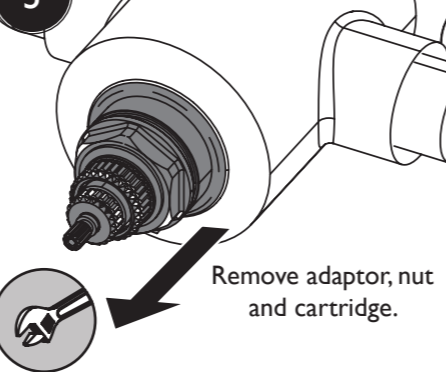
Maintenance - Cartridge Cleaning



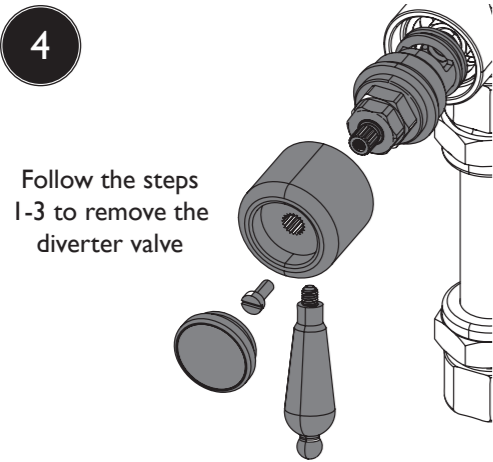
1 Remove temperature and flow handle.



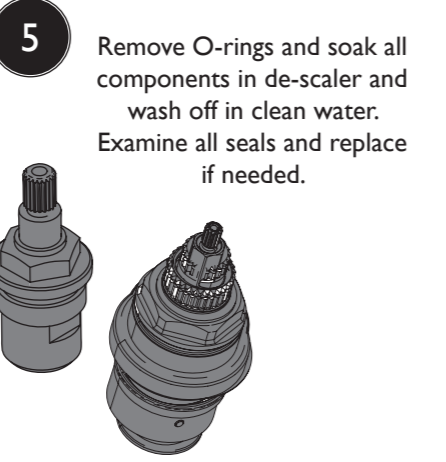
2 Unscrew the flow valve.



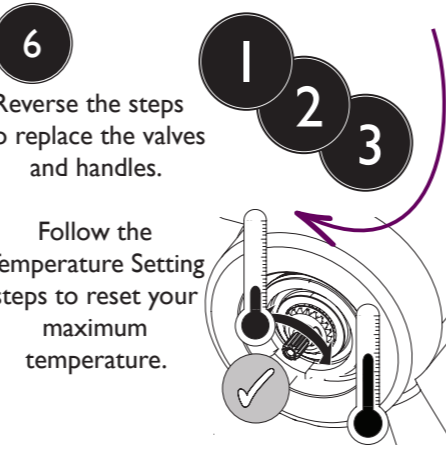
3 Remove adaptor, nut and cartridge.



4 Follow the steps 1-3 to remove the diverter valve



5 Remove O-rings and soak all components in de-scaler and wash off in clean water. Examine all seals and replace if needed.



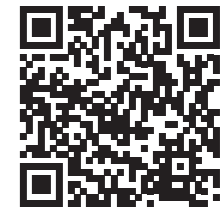
6 Reverse the steps to replace the valves and handles.
Follow the Temperature Setting steps to reset your maximum temperature.

Troubleshooting		
Symptom	Cause	Remedy
No flow or low flow rate	Partially closed isolation valve.	Open isolation valve.
	Instantaneous water heater cycles on and off as flow rate or pressure is too low.	Increase water flow rate or pressure through system.
	Head of water is below the minimum distance required.	Refer to the specification for the minimum distance required.
	Are the water supply pressures balanced?	If pressures are unbalanced, a pressure reducing valve should be used for optimum performance.
	Hot or cold water being drawn off elsewhere causing pressure changes or instantaneous boiler temperature changes.	Do not use other water outlets when using the shower.
	Airlock or partial blockage in the supply pipework.	Flush through pipework and filters to ensure removal of debris and any airlocks.
Maximum Water Temperature too Hot/Cold	Hot/Cold water supply has failed	Check the hot and cold feeds. The shower will not work if either fails.
	Maximum Water Temperature needs adjusting.	Refer to the Temperature Setting section to set your desired maximum temperature.
Outlet Water Temperature too Hot/Cold	Filter/pipe blockage	Flush through pipework and filters to ensure removal of debris and any airlocks.
	Installation conditions outside operating parameters.	Refer to the specification for the minimum distance required.
	Hot water temperature is less than 10°C above the required blend temperature	Adjust hot water temperature or wait for water to reheat if a stored water system is used.
	Instantaneous water not igniting because the water flow rate is too low.	Increase water flow rate through the system. Refer to the Maintenance section to clean/check the cartridge and filters for any damage. Contact your boiler manufacturer.
Only hot/cold water from Shower Valve	Instantaneous water not igniting because the water pressure is too low.	Increase water pressure through the system. Contact your boiler manufacturer.
	Inlet water supplies are reversed.	Check the water inlet connections are the correct way around: Hot on the left, Cold on the right when viewed from the front. Rework pipework as necessary.
Water dripping from shower	Filter/pipe blockage	Flush through pipework and filters to ensure removal of debris and any airlocks.
	This is normal for a short time after using the shower.	This is caused by residual water tension, the build up of water in the shower.
Shower does not turn on	If water continues to drip, possibly due to the cartridge	Remove cartridge and clean, refer to the 'Maintenance' section before starting any maintenance.
	Closed isolation valve.	Open isolation valve.
	Mains water supply turned off.	Turn on mains water supply.

Our Guarantee

The confidence we have in the quality of our products and services enables us to offer a free peace-of-mind product guarantee from 2 years up to a lifetime guarantee against any manufacturing faults, with proof of purchase. In addition, our attentive customer service team are available to help solve any problems which may arise quickly and effectively so you can enjoy your bathroom.

To see the specific guarantee for this product, scan the QR Code or visit the following URL: <https://www.heritagebathrooms.com/service-centre/guarantee>



HERITAGE BATHROOMS

Bristan Group Ltd.
 UK: Heritage Bathrooms, B78 ISG.
 EU: Masco Europe S.à.r.l., 14 Rue Strachen 6933 Mendsdorf, Luxembourg.

Customer Service: +44330 026 8503
Web: www.heritagebathrooms.com
Email: enquire@heritagebathrooms.com

A Masco Company