

HERITAGE

BATHROOMS

Installation Guide



Models Covered:

Dartmouth Bath Shower Mixer
TDACC02 / TDACBB02 / TDACBL02

Dartmouth Bath Filler
TDACC07 / TDACBB07 / TDACBL07

Please keep this booklet for future reference.

Installer: When you have read these instructions, please ensure you leave them with the user.

INTRODUCTION

Thank you for buying a Heritage Product. When you buy a Heritage product, you can be confident that it not only features a beautiful, distinctive, classic design, but that it has also been made to the very highest quality standards.

To ensure that it works to its full potential, it needs to be fitted correctly.

These fitting instructions have been created to give you all of the information you need and, if you need any further help, please do not hesitate to give us a call on: **0330 026 8503**.

CONTENTS

| | |
|----------------------------------|------|
| SAFETY NOTES | 3 |
| SPECIFICATION | 3 |
| PACK CONTENTS | 4 |
| TOOLS REQUIRED | 4 |
| INSTALLATION - Bath Shower Mixer | 5-6 |
| INSTALLATION - Bath Filler | 7 |
| MAINTENANCE | 8-11 |
| CARING FOR YOUR PRODUCT | 11 |
| TROUBLESHOOTING | 12 |
| GUARANTEE | 13 |
| NEED HELP? | 13 |



SAFETY NOTES

All products manufactured and supplied by Heritage are safe to use provided that they are installed, operated and receive regular maintenance in accordance with these instructions.

This product needs to be installed in accordance with, and meet the requirements of the Water Supply (Water Fittings) Regulations 1999 and current by-laws.

Isolation valves must be fitted to the inlet water supplies to ensure ease of future maintenance.

Before installing this product the water supply must be thoroughly flushed in order to remove any swarf, solder etc. Full access must be made available for future maintenance/ servicing purposes.

If power tools are used do not forget to:

- Wear eye protection
- Unplug equipment after use

This product must not be modified in any way as this will invalidate the guarantee.

If in doubt, contact a registered plumber, your Local Water Authority or the Secretary of the Institute of Plumbing, address as follows:-

The Institute of Plumbing,
64 Station Lane,
Hornchurch,
Essex,
RM12 6NB, Tel: 01708 472791

SPECIFICATION

OPERATING PRESSURE RANGE (BAR): TDAC__07 - Min 0.2 bar, Max 5.0 bar
TDAC__02 - Min 0.5 bar, Max 5.0 bar

MAXIMUM STATIC PRESSURE (BAR): 10 bar

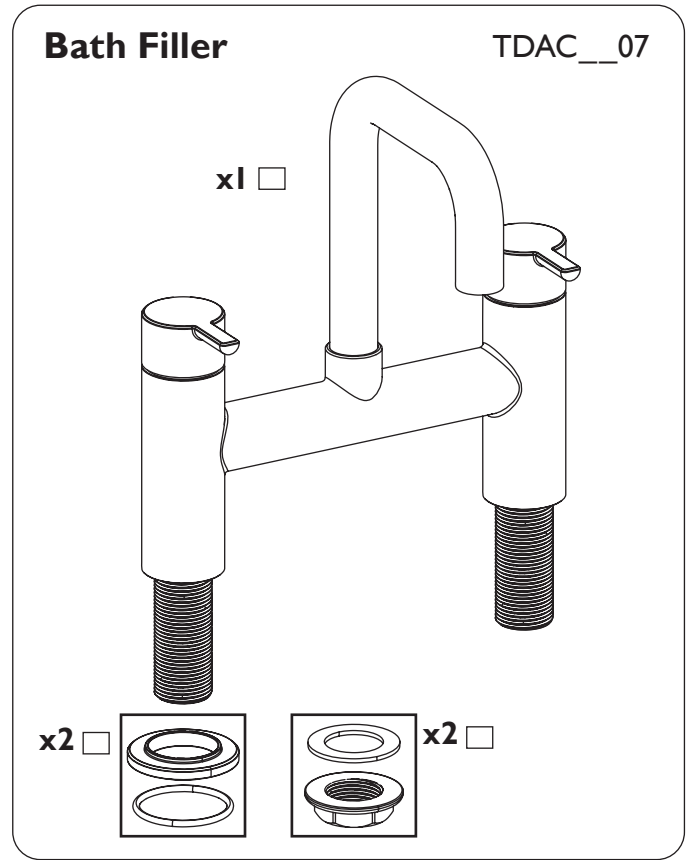
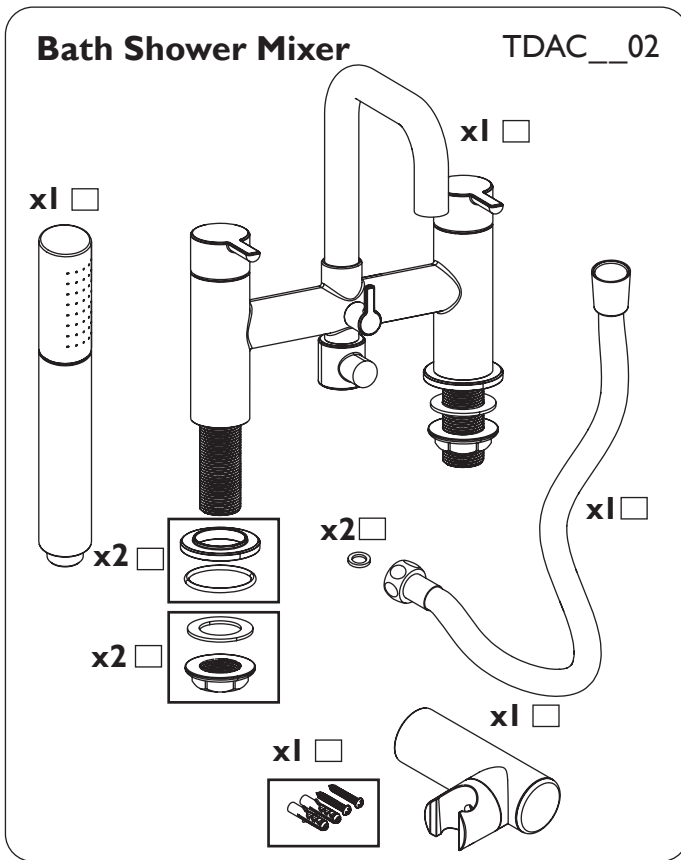
INLET WATER TEMPERATURE RANGE: Hot - Max 65°C

INLET CONNECTIONS: 3/4" BSP

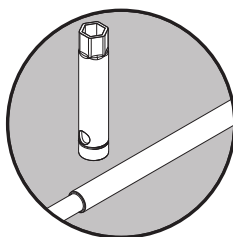
HOSE CONNECTION: G1/2" (TDAC__02 only)



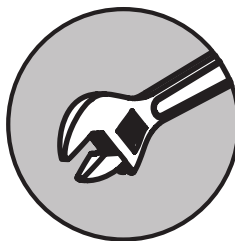
PACK CONTENTS



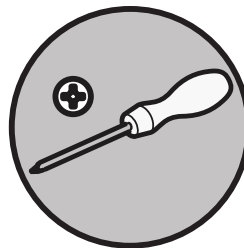
TOOLS REQUIRED



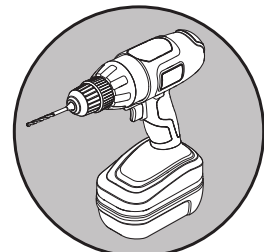
**32mm
Box Spanner**



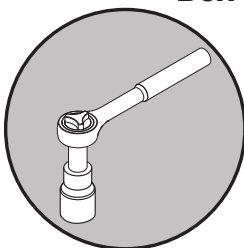
**Adjustable
Spanner**



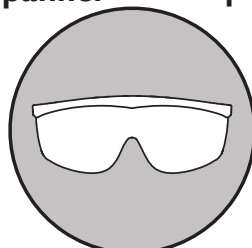
**Cross Head
Screwdriver**



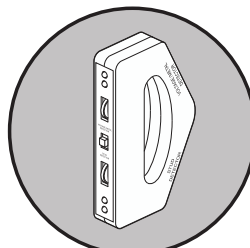
Drill



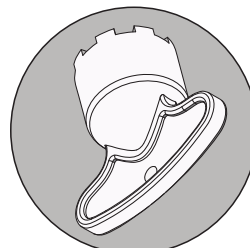
**17mm Socket
Spanner**



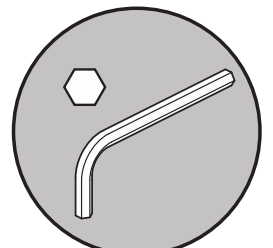
Safety Goggles



**Electronic
Detector**



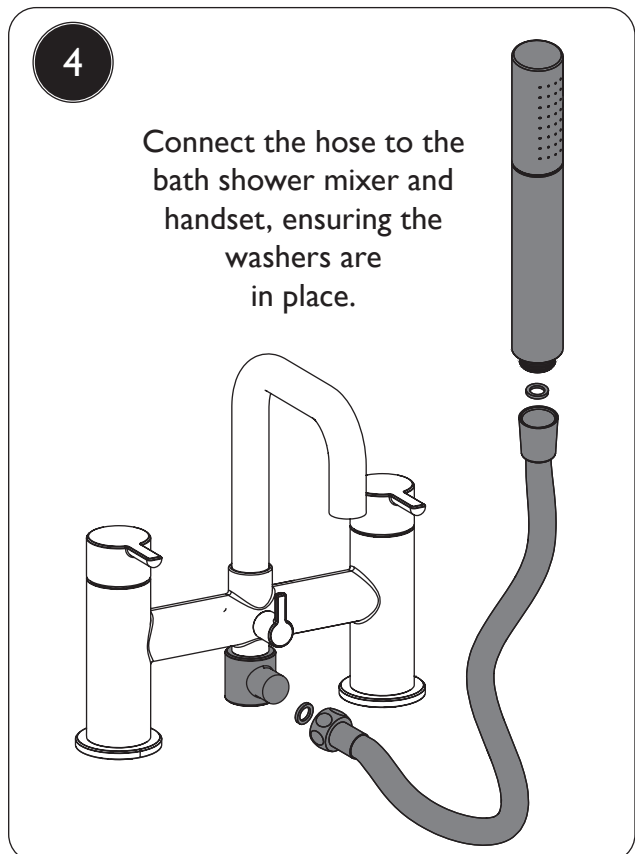
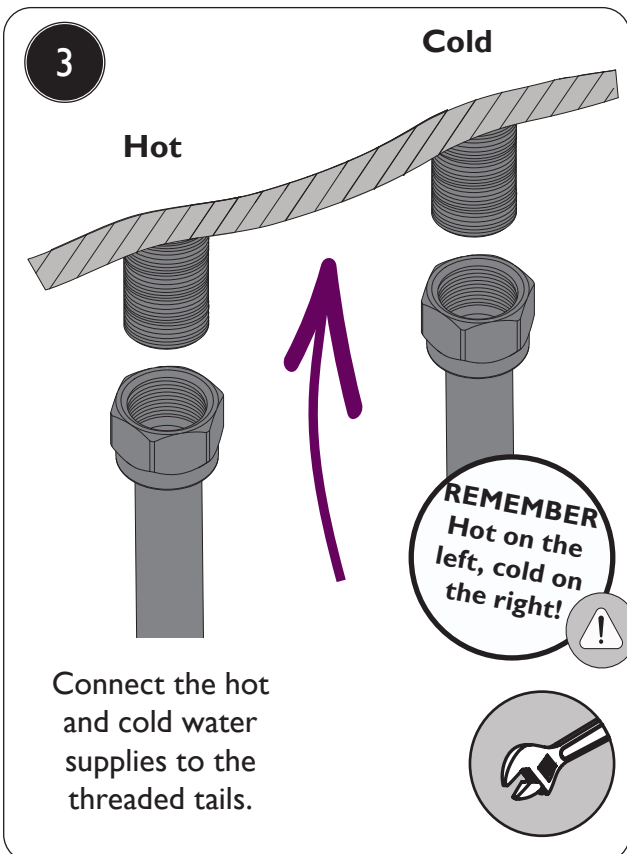
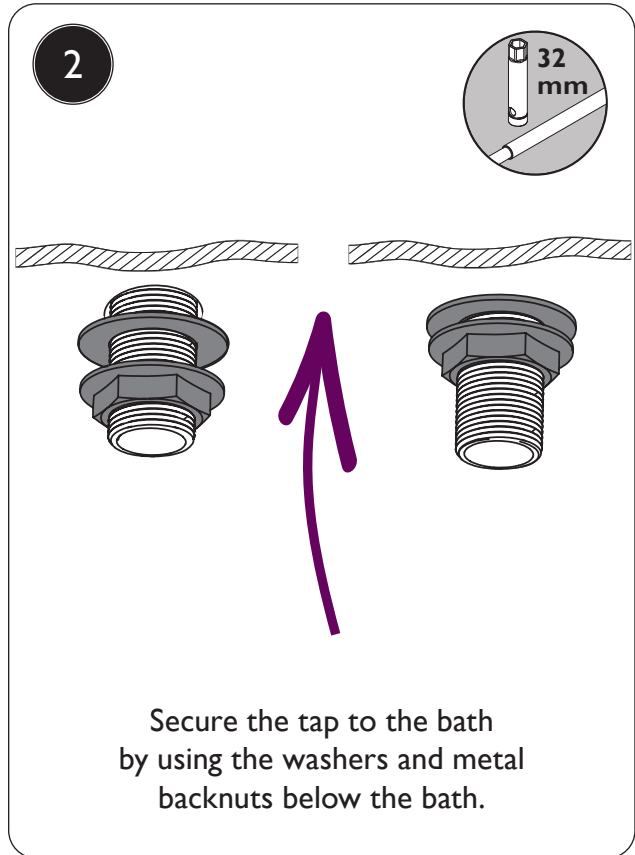
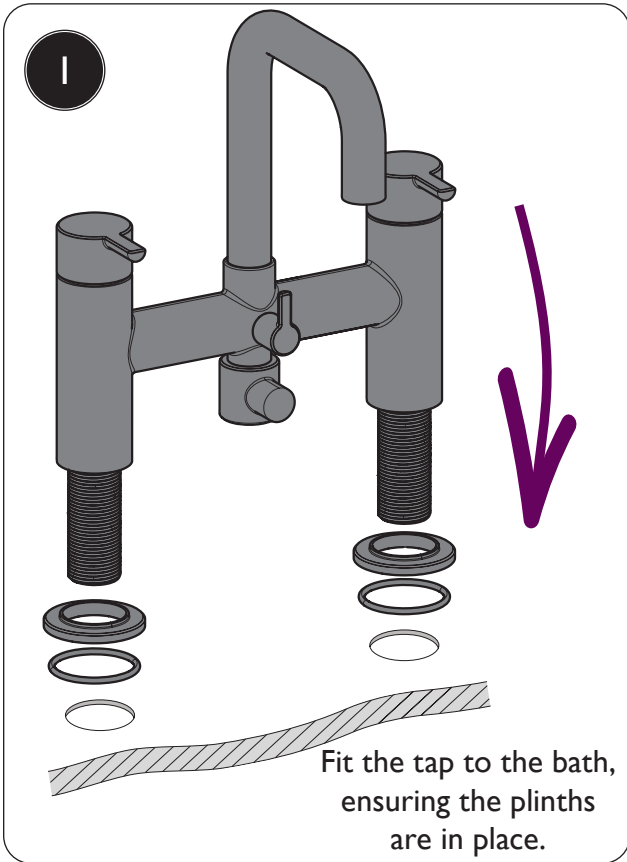
16mm Outlet Key



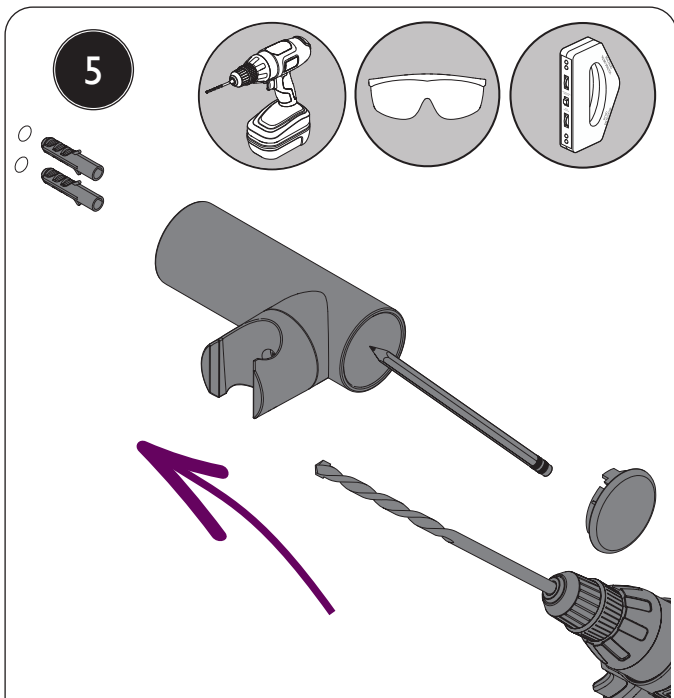
**2.5mm, 2mm
and 8mm
Hexagonal Key**



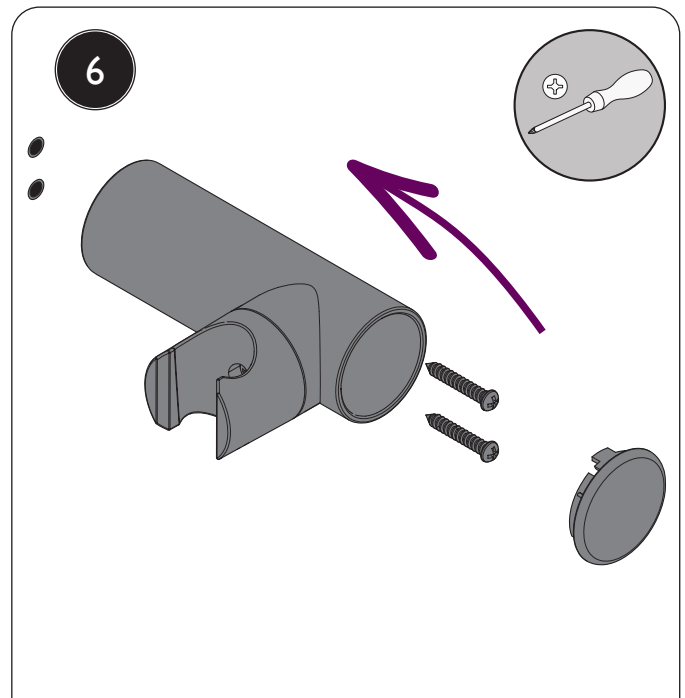
INSTALLATION - BATH SHOWER MIXER



INSTALLATION - BATH SHOWER MIXER

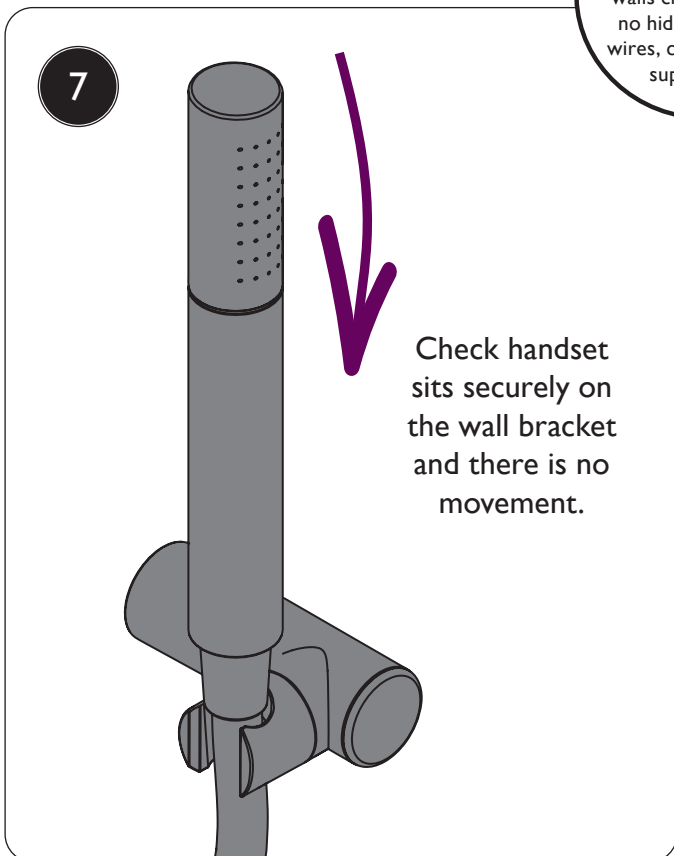


5
Plan where to install the wall bracket, making sure the hose and handset can easily reach. Remove the cap, mark the position of the fixing holes and drill.

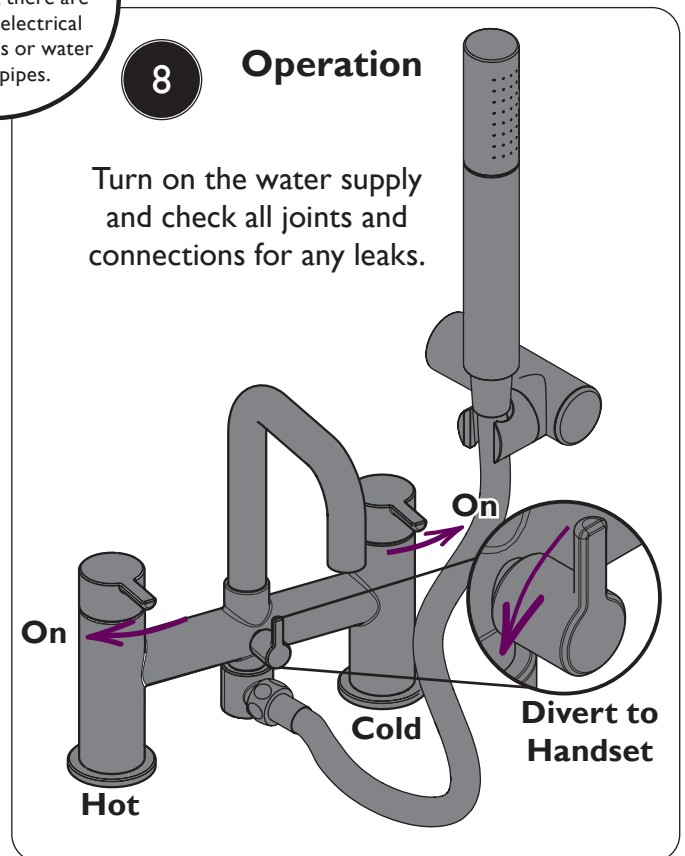


6
Screw the wall bracket to the wall. Use wall plugs where necessary depending on the wall type. Push on the cap.

IMPORTANT
Prior to drilling into walls check there are no hidden electrical wires, cables or water supply pipes.



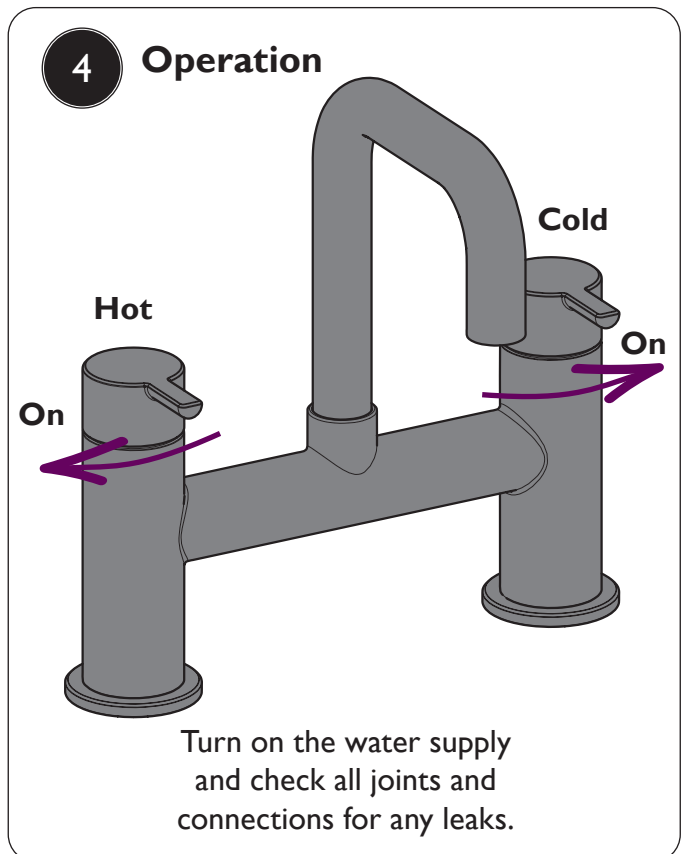
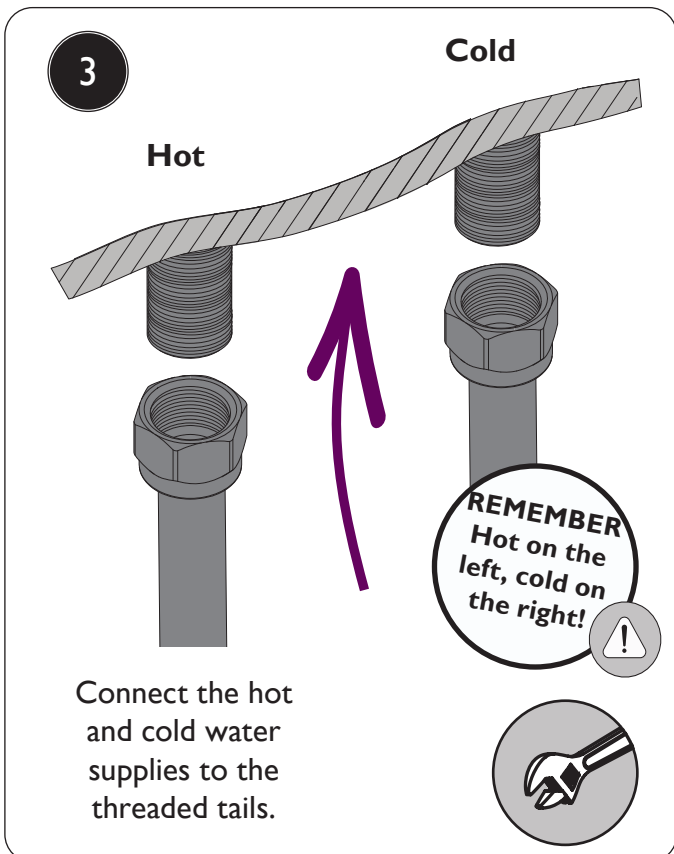
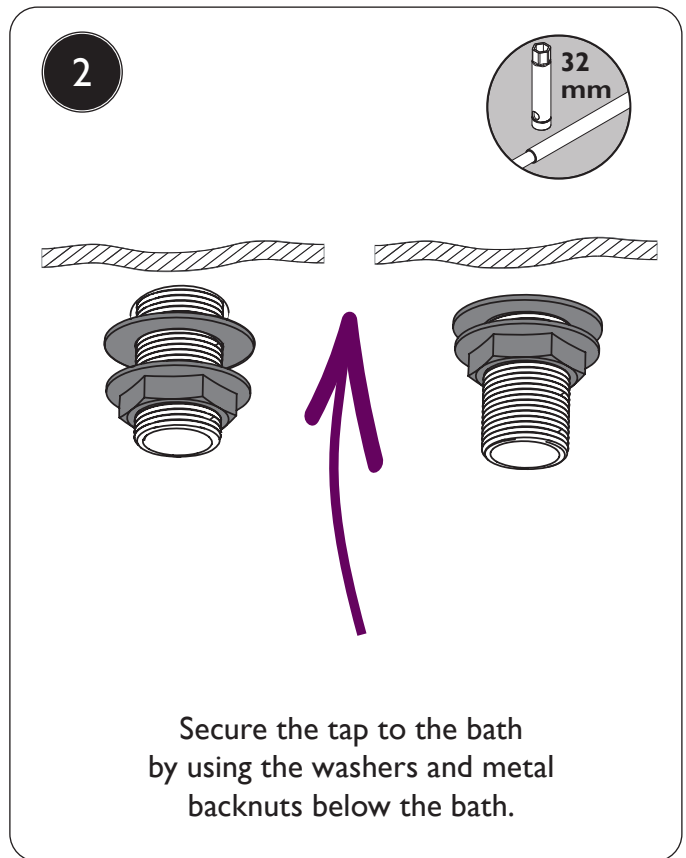
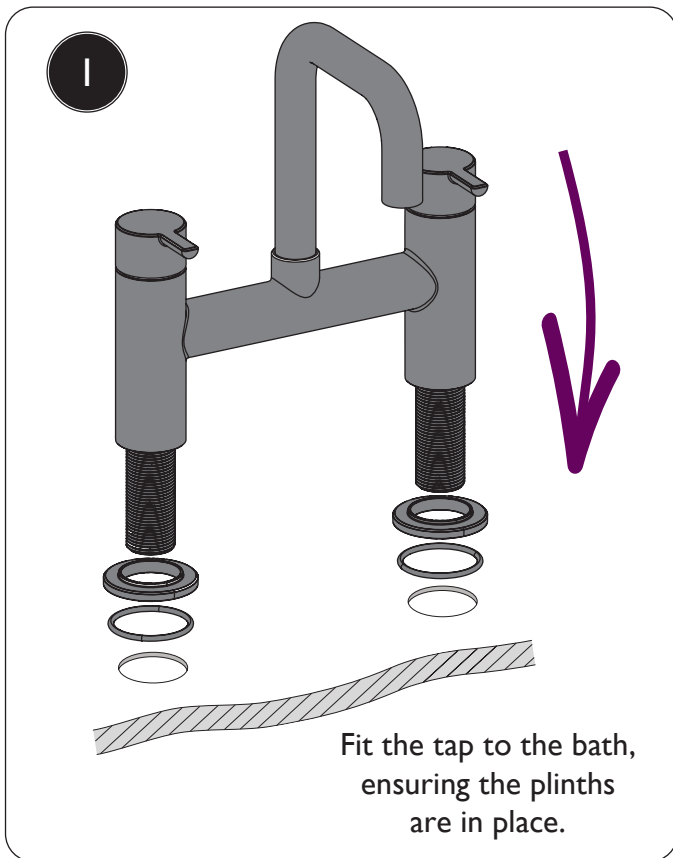
7
Check handset sits securely on the wall bracket and there is no movement.



8 Operation

Turn on the water supply and check all joints and connections for any leaks.

INSTALLATION - BATH FILLER

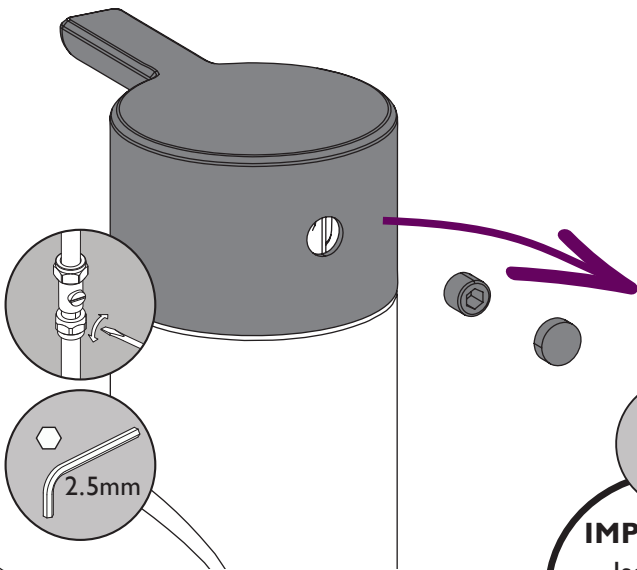


MAINTENANCE

1

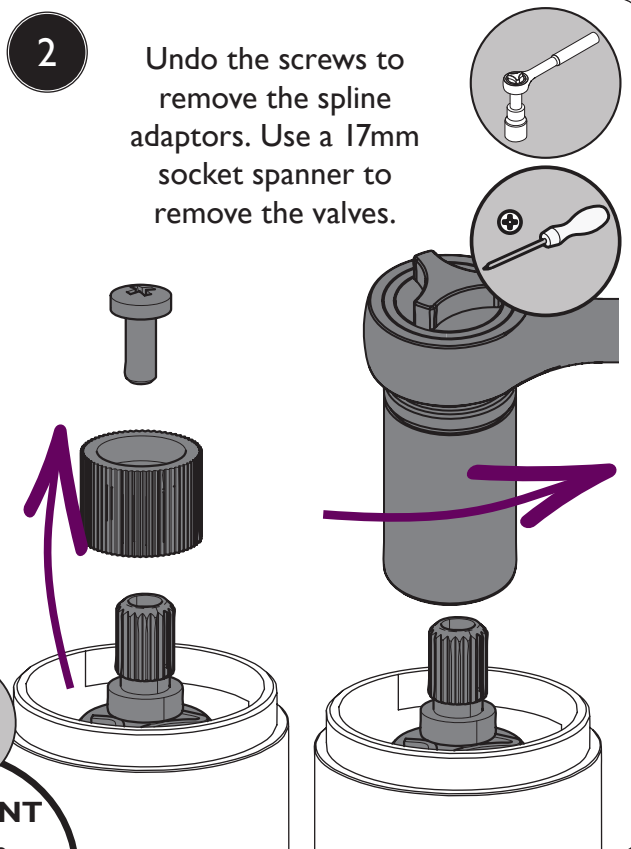
To Replace Valves

Remove cap and undo the grub screws to remove the handles.



2

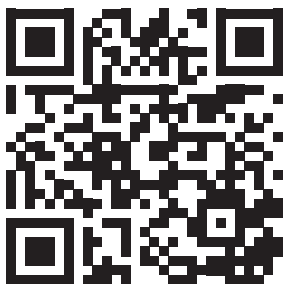
Undo the screws to remove the spline adaptors. Use a 17mm socket spanner to remove the valves.



IMPORTANT
Isolate the water supply before starting!

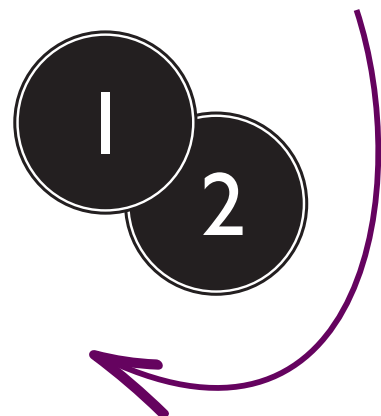
3

Spare Parts



Please visit www.heritagebathrooms.com or scan the QR Code and search for your product code to replace valves if needed.

4

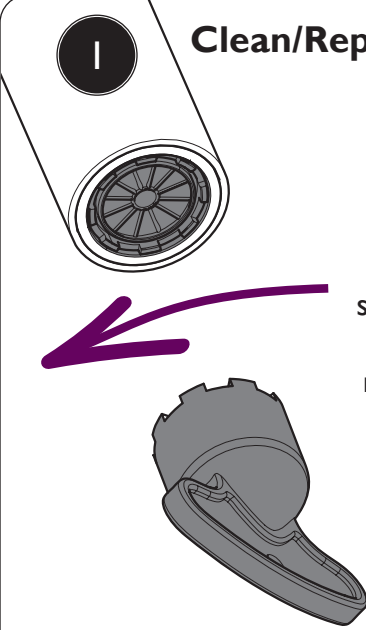


Reverse the steps to replace the valves and handles.




MAINTENANCE



1 Clean/Replace Outlet



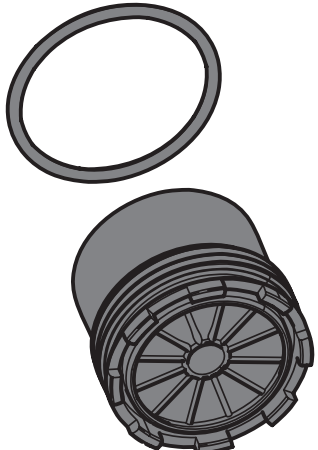
Using a 16mm aerator key (not supplied), unscrew the outlet and remove, including the O-Ring.



Visit our website to purchase your outlet key if required.

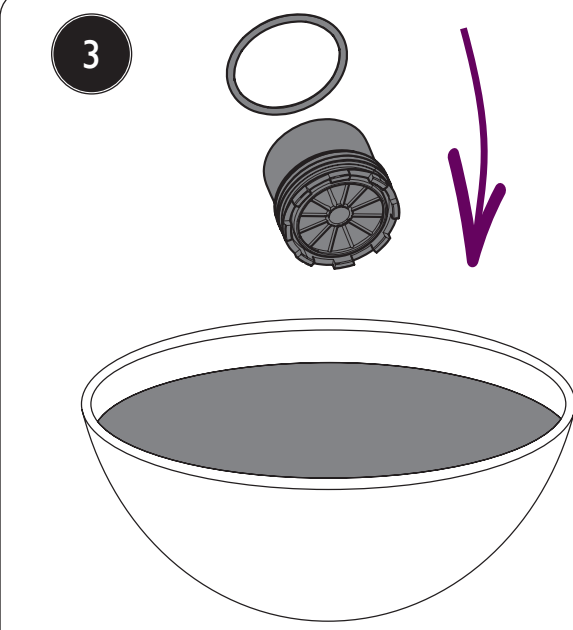


2



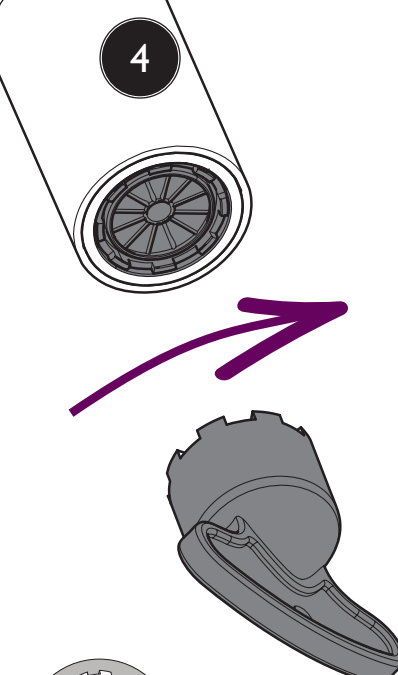
Check the outlet and seal for any damage, replace if necessary.

3




If there is no damage, soak the outlet in a suitable solution until fully de-scaled. Rinse the outlet and seal thoroughly to remove chemicals and debris.

4



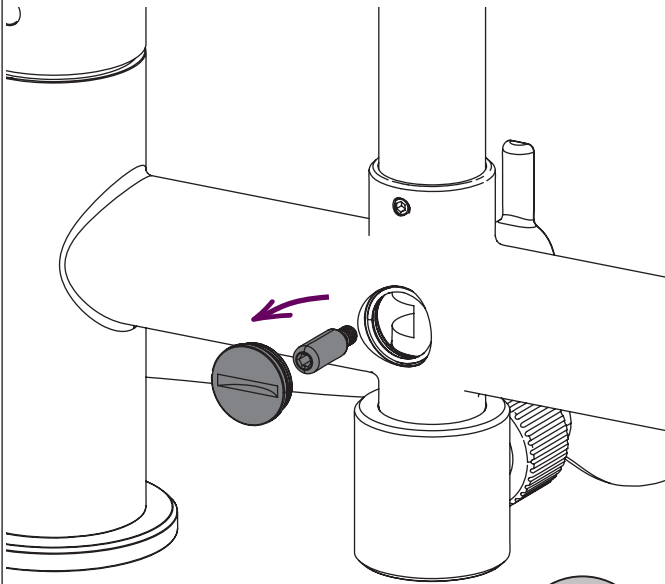
Replace the outlet, ensuring the seal is in place.

Turn back on the water supply and check the connections for any leaks.



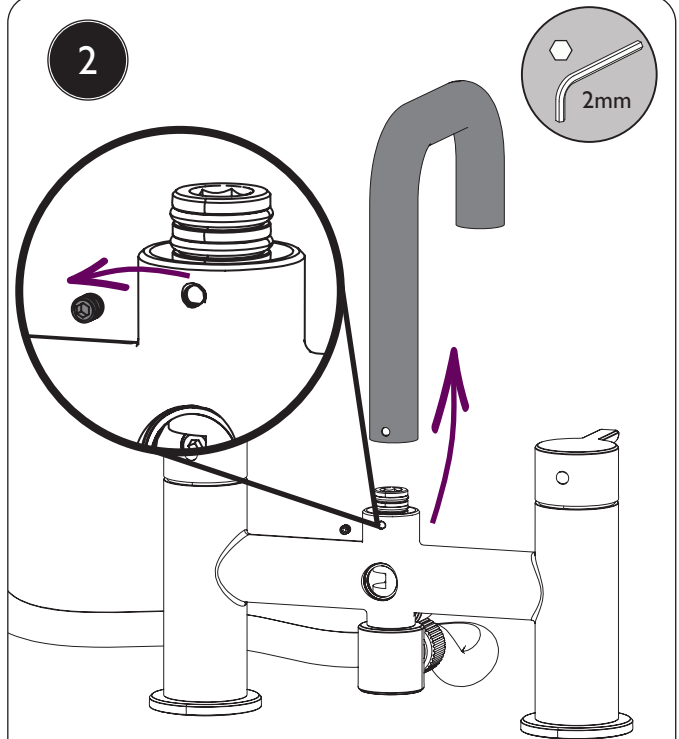
MAINTENANCE

1 To Replace Diverter



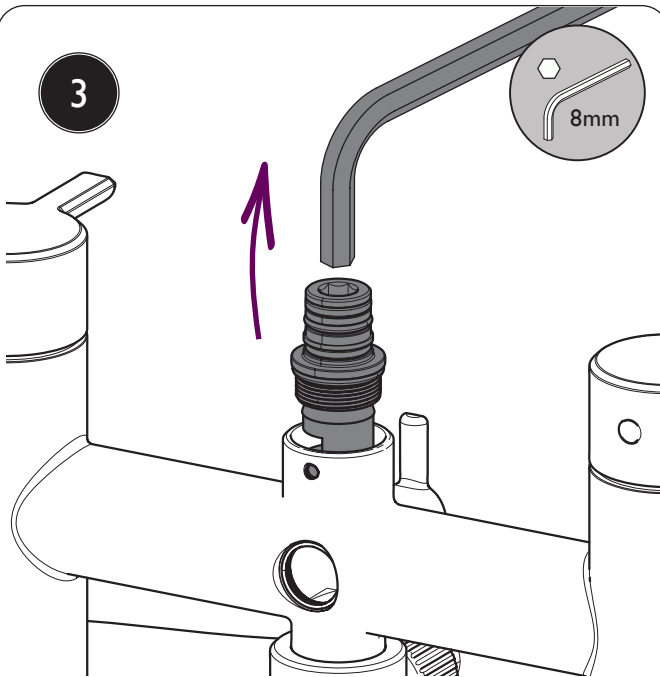
Unscrew and remove the rear cap using a coin. Use a 2.5mm hex key to remove the diverter peg.

2



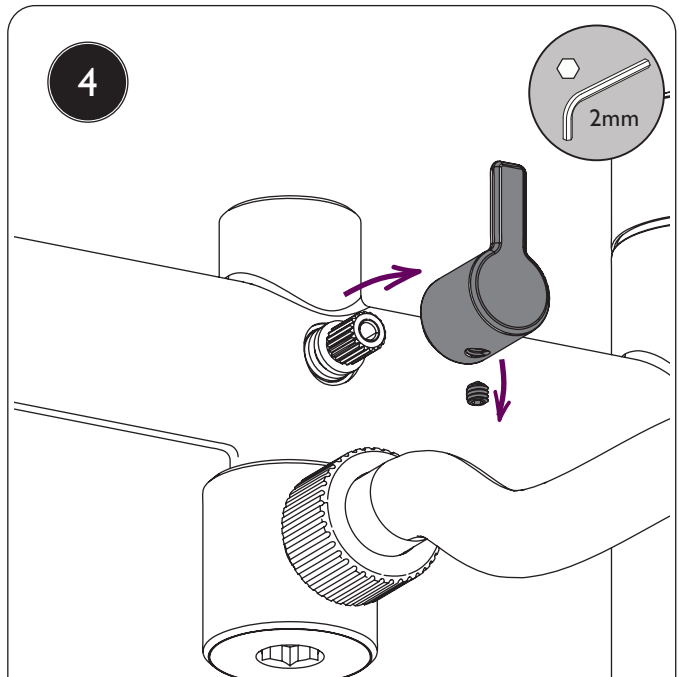
Unscrew the grub screw securing the spout and lift the spout off.

3



Unscrew the spout adaptor from the top using an 8mm hex key then pull out the diverter. Reverse steps 1-3 to replace diverter. If diverter pin needs to be replaced follow steps 4-6.

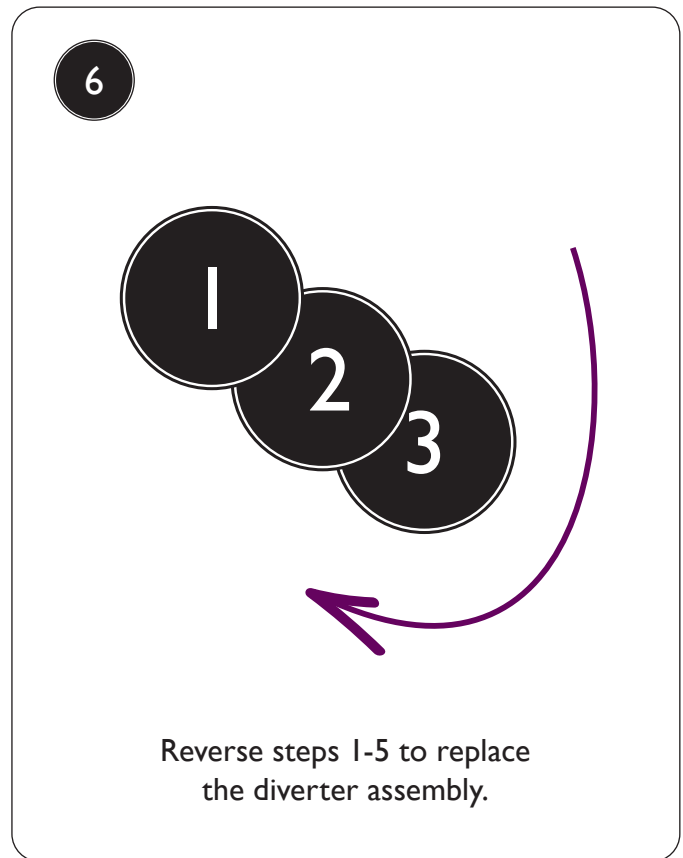
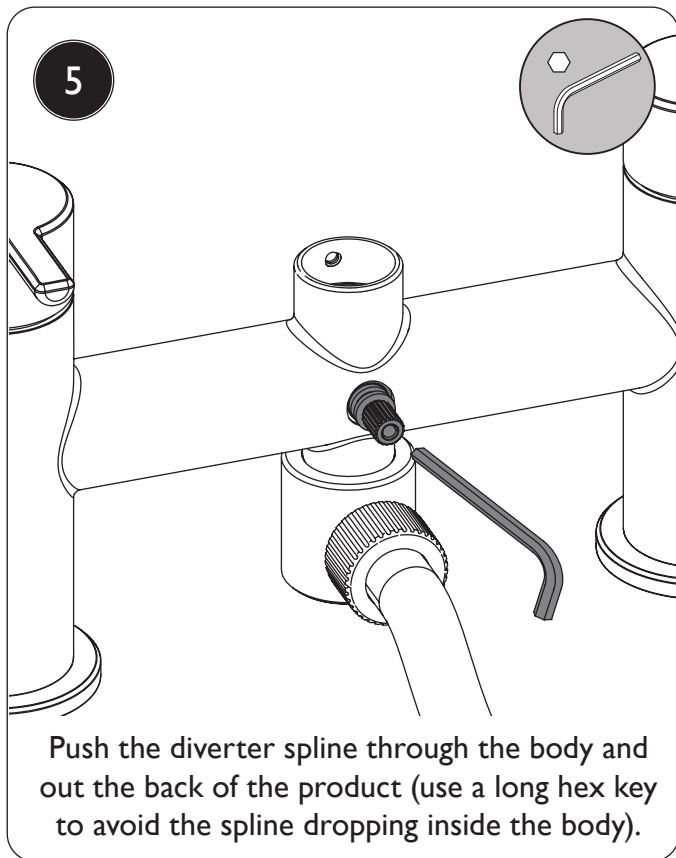
4



Unscrew the grub screw holding the diverter handle and remove the handle.



MAINTENANCE



CARING FOR YOUR PRODUCT

Heritage products are made from premium materials, with hand polished, electroplated, PVD or EPD finishes.

Your taps or shower should be regularly cleaned with warm water, a mild pH-neutral liquid soap, and polished with a soft cloth. Any residues from soap, toothpaste, shampoos and shower gels can cause blemishes if not rinsed off straight after use.

Household bleaches and cleaners contain harsh chemicals and may damage the surface finish. Avoid using abrasive cloths, scouring pads, scrub sponges, steel wool or anything similar.

Some surfaces such as nickel and pewter may be affected by the dye found in some cloths, so it is also important to avoid hanging cloths on spouts.

Your handset comes with rub clean nozzles, simply rub your fingers over the nozzles to clear any any build-up or debris.



TROUBLESHOOTING

| Symptom | Cause | Remedy |
|---------------------------------|---|--|
| No flow or low flow rate | Partially closed isolation valve. | Open isolation valve. |
| | Instantaneous water heater cycles on and off as flow rate or pressure is too low. | Increase water flow rate or pressure through system. |
| | Head of water is below the minimum distance required. | Refer to specification for minimum distance required. |
| | Hot or cold water being drawn off elsewhere causing pressure changes or instantaneous boiler temperature changes. | Do not use other water outlets when using the taps. |
| | Airlock or partial blockage in the supply pipework. | Flush through pipework to ensure removal of debris and any airlocks. |
| Water dripping from taps | This is normal for a short time after using the taps. | This is caused by residual water tension, the build up of water in the tap body. |
| | If water continues to drip, possibly due to the ceramic disc valves | Remove valves and clean, refer to 'Maintenance' section before starting any maintenance. |
| Taps do not turn on | Closed isolation valve. | Open isolation valve. |
| | Mains water supply turned off. | Turn on mains water supply. |

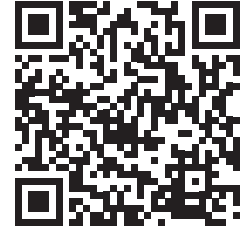


GUARANTEE

The confidence we have in the quality of our products and services enables us to offer a free peace-of-mind product guarantee from 2 years up to a lifetime guarantee against any manufacturing faults, with proof of purchase. In addition, our attentive customer service team are available to help solve any problems which may arise quickly and effectively so you can enjoy your bathroom.

To see the specific guarantee for this product, scan the QR Code or visit the following URL:

<https://www.heritagebathrooms.com/service-centre/guarantee>



NEED HELP?

In the unlikely event that you encounter a problem with your Heritage product, you must, in the first instance, contact the retailer you purchased it from. They will advise as to whether it is due to a manufacturing fault or an installation fault. If the problem is due to a manufacturing fault, they will contact us to arrange a supply of a replacement product as soon as possible. To speak to a Heritage customer service advisor, please contact our technical helpline on **0330 026 8503**.



NOTES



NOTES



HERITAGE[®]

BATHROOMS

We love to see how Heritage products are used so please keep in touch and share pictures of your new bathroom with us.



@heritagebathrooms

If you have any queries, our dedicated customer service teams and products experts are available to help.

Email us enquire@heritagebathrooms.com Call us 0330 026 8503 Website www.heritagebathrooms.com

UK: Heritage Bathrooms, Pooley Hall Drive, Birch Coppice Business Park, Dordon, Tamworth B78 1SG

EU: Masco Europe S.à.r.l., 14 Rue Strachen, 6933 Mensdorf, Luxembourg.