

HERITAGE

BATHROOMS

Installation Guide



Models Covered:

Deluxe Flexible Shower Kits

Please keep this booklet for future reference.

Installer: When you have read these instructions, please ensure you leave them with the user.

INTRODUCTION

Thank you for buying a Heritage Product. When you buy a Heritage product, you can be confident that it not only features a beautiful, distinctive, classic design, but that it has also been made to the very highest quality standards.

To ensure that it works to its full potential, it needs to be fitted correctly.

These fitting instructions have been created to give you all of the information you need and, if you need any further help, please do not hesitate to give us a call on: 0330 026 8503.

CONTENTS

INTRODUCTION	2
SAFETY NOTES	3
TOOLS REQUIRED	4
GUARANTEE	4
NEED HELP?	4
PACK CONTENTS	5
INSTALLATION	6-7



SAFETY NOTES

Please make sure you read these instructions and retain for future use.

All products manufactured by Heritage Bathrooms are safe, providing they are installed and used correctly and also receive maintenance when needed.

Showers, including the connecting water and waste system need to be installed in accordance with and meet the requirements of the Water Supply Regulations 1999 (Water Fittings) and current by-laws. If you are in doubt about your ability to install this product correctly or safely, you should employ the services of an experienced qualified plumber.

- It will be beneficial to have somebody to hold the product whilst marking and levelling is achieved in order to prevent injury.
- Do not use if the shower head or shower hose has been damaged or blocked.
- Do not crush or kink the shower hose, this could damage the hose and cause leaks.

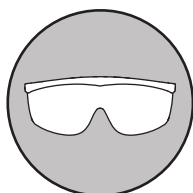
This product must not be modified in any way otherwise this will invalidate the guarantee.

Consider the following whilst using power tools:

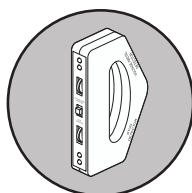
- Prior to drilling into walls, check there are no hidden electrical cables or wires and there are also no water pipes. These can potentially be found using an electrical or metal detector. You may also need to know some of the schematics of previous installations to determine the suitability and accommodation of the installation.
- Wear the correct PPE, especially ear, eye and hand protection when using power tools. Unplug any mains equipment after use.
- Keep electrical equipment away from sources of water.
- If a blow-lamp is used when plumbing, the flame must be kept well away from the product otherwise damage may occur.



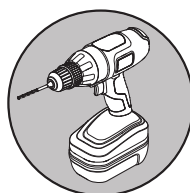
TOOLS REQUIRED



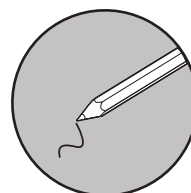
**Safety
Goggles**



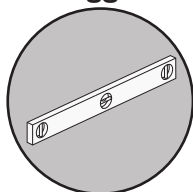
**Electronic
Detector**



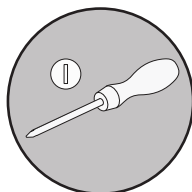
Drill



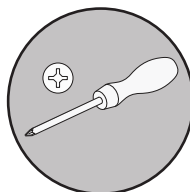
Pencil



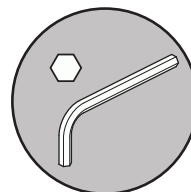
Spirit Level



**Flat Head
Screwdriver**



**Cross Head
Screwdriver**



**2mm
Hexagonal Key**

GUARANTEE

The confidence we have in the quality of our products and services enables us to offer a free peace-of-mind product guarantee from 2 years up to a 25 year guarantee against any manufacturing faults, with proof of purchase. In addition, our attentive customer service team are available to help solve any problems which may arise quickly and effectively so you can enjoy your bathroom.

To see the specific guarantee for this product, scan the QR Code or visit the following URL:

<https://www.heritagebathrooms.com/service-centre/guarantee>



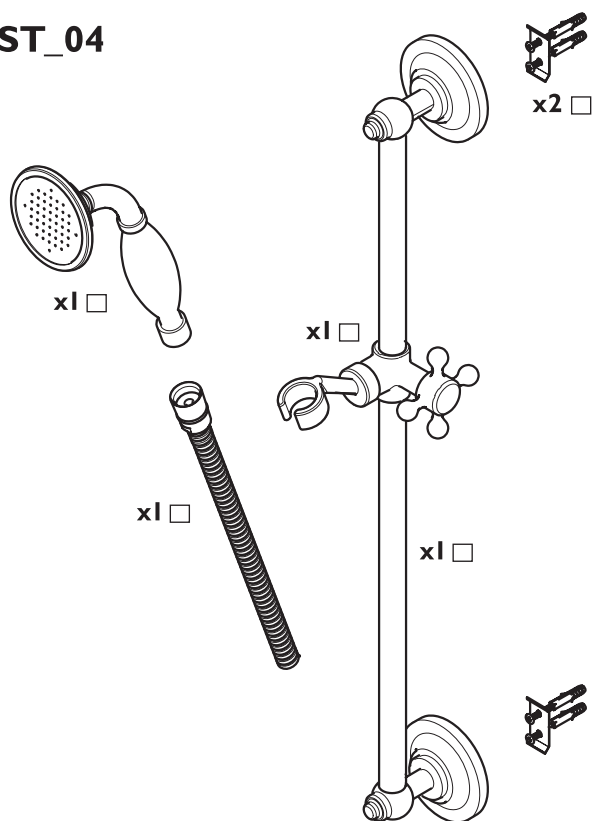
NEED HELP?

If your product does not function correctly when you first use it, contact your plumber and make sure that it has been installed and commissioned in line with this Installation and User Guide supplied with the product. If this doesn't solve the problem, then please visit <https://www.heritagebathrooms.com/service-centre/help-and-advice> for some helpful hints and tips; or contact Heritage Customer Service on 0330 026 8503 where our expert team of advisors will be able to offer you, or your plumber, help and advice.

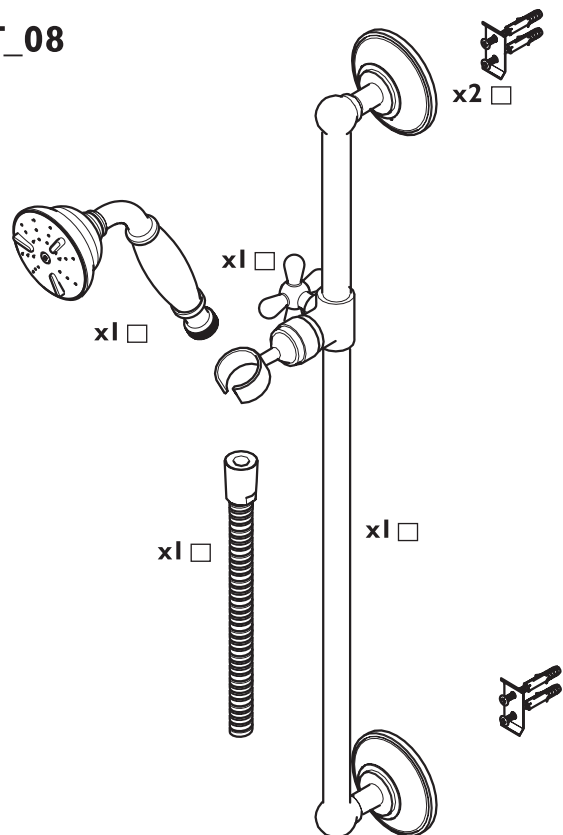


PACK CONTENTS

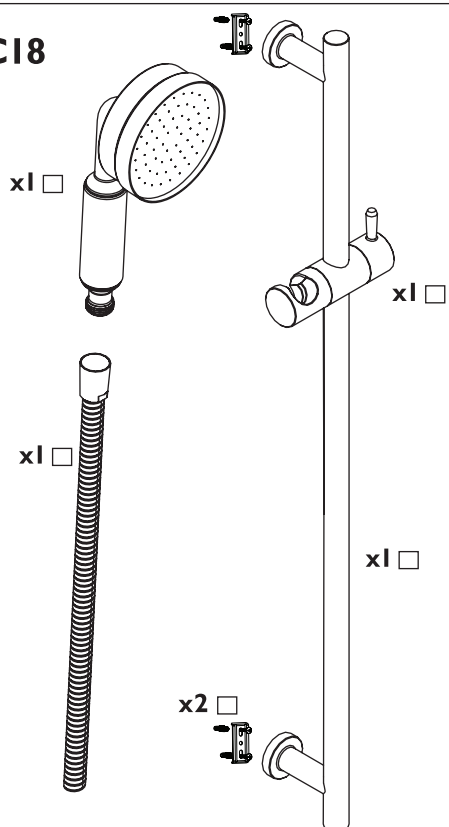
ST_04



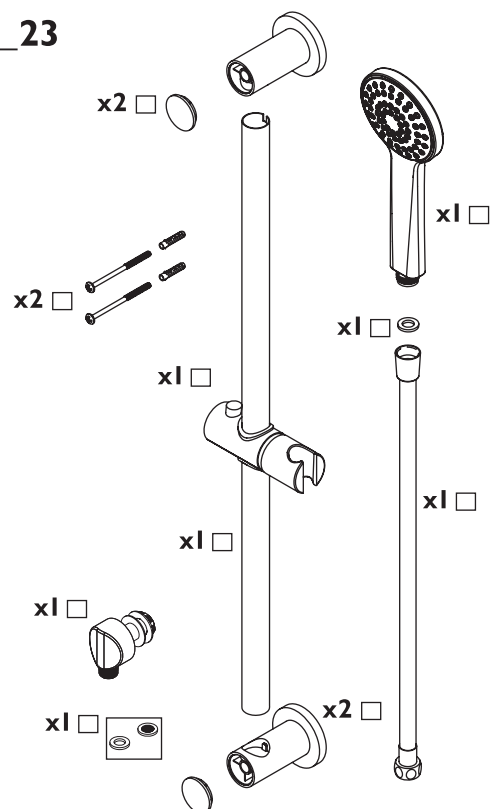
ST_08



STCI8

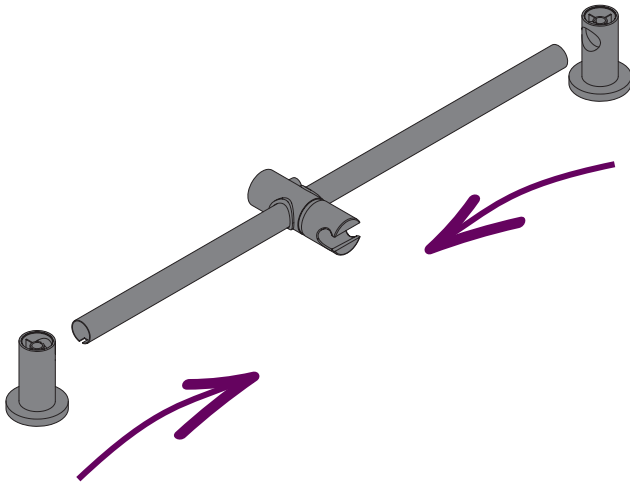


ST_23



INSTALLATION

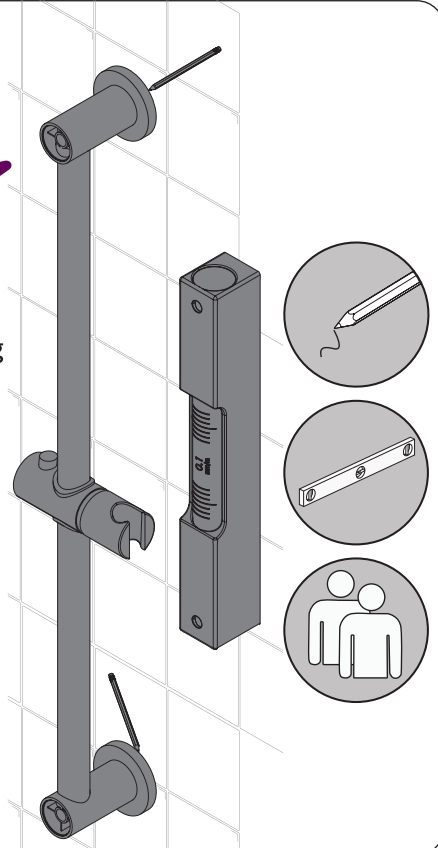
1



Loosely assemble the riser rail.
Ensure the slider is in the correct position
with the button/lever pointing upwards.

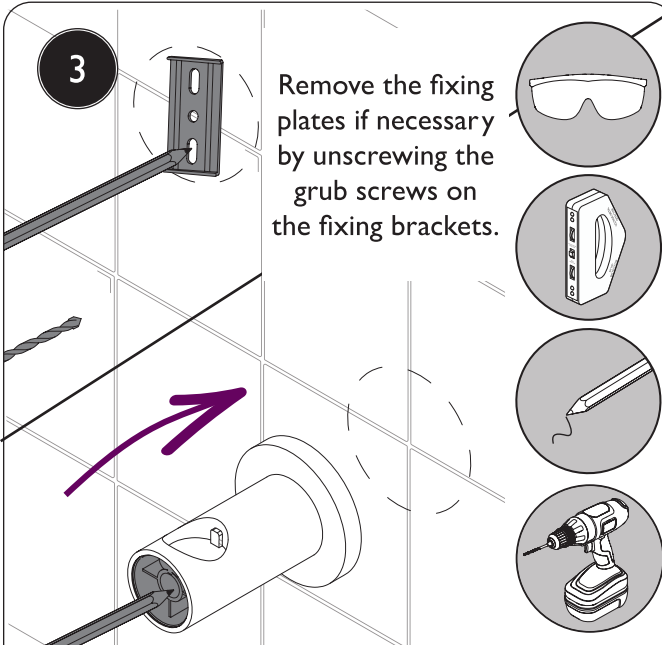
2

Position the
riser rail, taking
into account
user heights
and that the
hose can reach
the shower
outlet with
the handset
in the holder.
Check the
rail is straight
and mark
the bracket
positions.



3

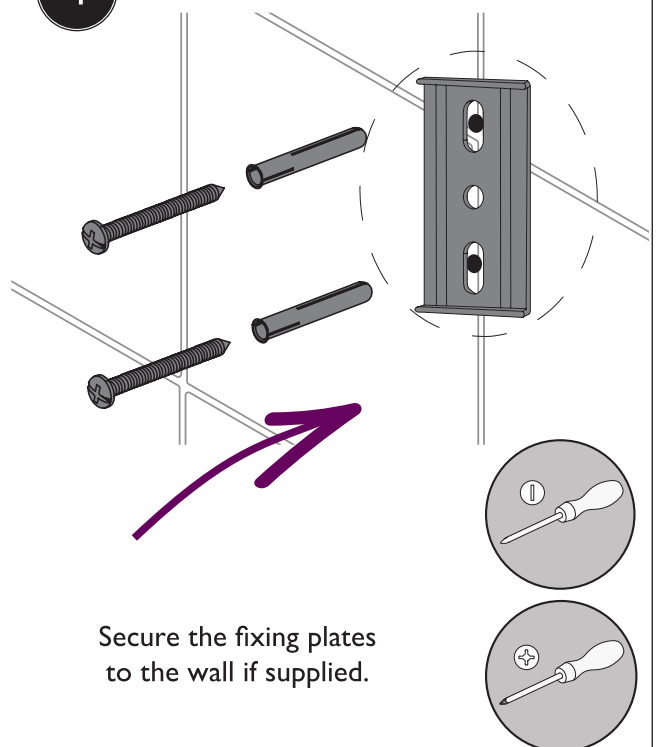
Remove the fixing
plates if necessary
by unscrewing the
grub screws on
the fixing brackets.



Mark the fixing holes in each bracket position and
drill. Use the wall plugs if necessary for your wall
type. If you are fitting the riser to a partition wall or
a wall of particularly soft friable substrate, you will
need appropriate fixings for the wall type.

4

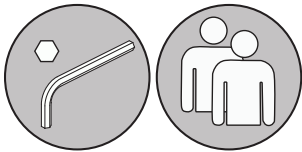
Secure the fixing plates
to the wall if supplied.



INSTALLATION

5

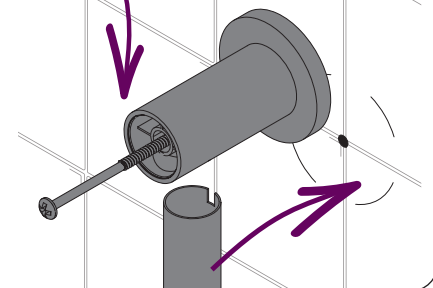
Place the riser rail over the top of the fixing plates and secure using the grub screws.



6

Secure the bottom bracket of the riser rail to the wall using the fixings supplied.

Place the riser rail into the bottom bracket, making sure the notches are towards the back of the rail. Push the top bracket on to the riser rail and secure to the wall.

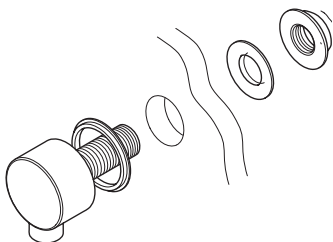


7

Wall Outlet Installation

Choose the location for the wall outlet and create a 25-30mm hole in the wall. Ensure your shower accessories have enough reach from that position. Finish the wall surface.

With rear access

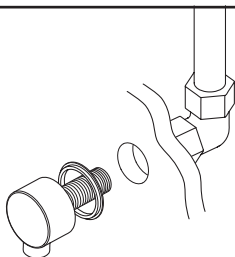


Fit the wall outlet, ensuring the washers are fitted either side of the wall.

Without rear access

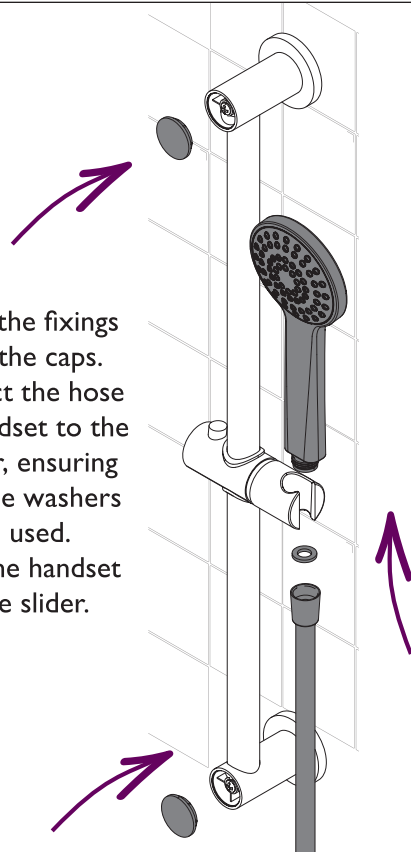
Plumb your outlet pipework to the desired location, fitting a 1/2" female connection at the hole in the wall (not supplied).

Screw the wall outlet into the 1/2" female connection, using a suitable thread sealant ensuring the rubber seal is fitted to the back of the wall outlet.



8

Cover the fixings using the caps. Connect the hose and handset to the shower, ensuring the hose washers are used. Place the handset in the slider.



HERITAGE[®]

BATHROOMS

We love to see how Heritage products are used so please keep in touch and share pictures of your new bathroom with us.



@heritagebathrooms

Contact Us
Bristan Group Ltd.
A Masco Company

If you have any queries, our dedicated customer service teams and products experts are available to help.

Email us enquire@heritagebathrooms.com Call us **+44330 026 8503** Website www.heritagebathrooms.com

UK: Heritage Bathrooms, Pooley Hall Drive, Birch Coppice Business Park, Dordon, Tamworth B78 1SG

EU: Masco Europe S.à.r.l., 14 Rue Strachen, 6933 Mensdorf, Luxembourg.