

HERITAGE

BATHROOMS

Installation Guide



Freestanding Vanity Unit Furniture and Ready
Made Freestanding Furniture

Please keep this booklet for future
Reference.

Installer: when you have read these
instructions please ensure you leave
them with the user.



Introduction

Thank you for buying a Heritage Product. When you buy a Heritage product, you can be confident that it not only features a beautiful, distinctive, classic design, but that it has also been made to the very highest quality standards. To ensure that it works to its full potential, it needs to be fitted correctly.

These fitting instructions have been created to give you all of the information you need and, if you need any further help, please do not hesitate to give us a call on 0844 701 8503.

Contents

Safety Notice	03
Installer Guidelines	03
Installation	04-08
Caring for your product	09
Adjustment of Doors	09
Guarantee	10-11

Safety Note

Please read these instructions & retain for future use. All products manufactured & supplied by Heritage are safe, provided they are installed correctly, used correctly, and receive regular maintenance in accordance with these instructions.

If you are in any doubt about your ability to install this product safely you must employ the services of a competent person who has experience of fitting products of this nature.

 Before starting any installation project please consider the following:

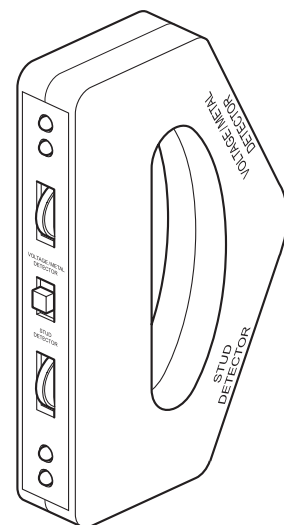
- Prior to drilling into walls, check there are no hidden electrical wires or cables or water supply pipes with the aid of an electrical detector.
 - If you use power tools do not forget:
 - Wear eye protection.
 - Unplug equipment after use.
 - This product must not be modified in any way as this will invalidate the guarantee.
 - These fittings need to be installed in accordance with and meet the requirements of the Water Supply (Water Fittings) Regulations 1999 and Scottish Byelaws 2004.
-

Installer Guidelines

This furniture comes already built/assembled and needs attaching to a fixed surface where necessary.

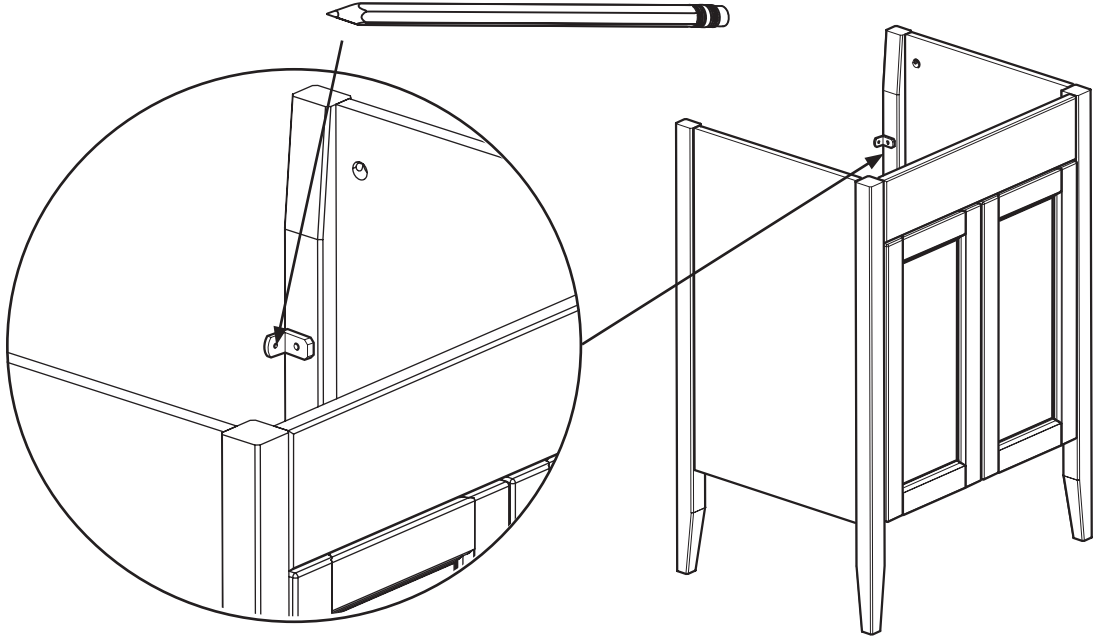
Always remember to check wall for cables and water pipes before drilling securing holes using a detection tool as seen.

The installation of this product greatly depends on the floor being level. If this is not the case, it must be corrected before installation.



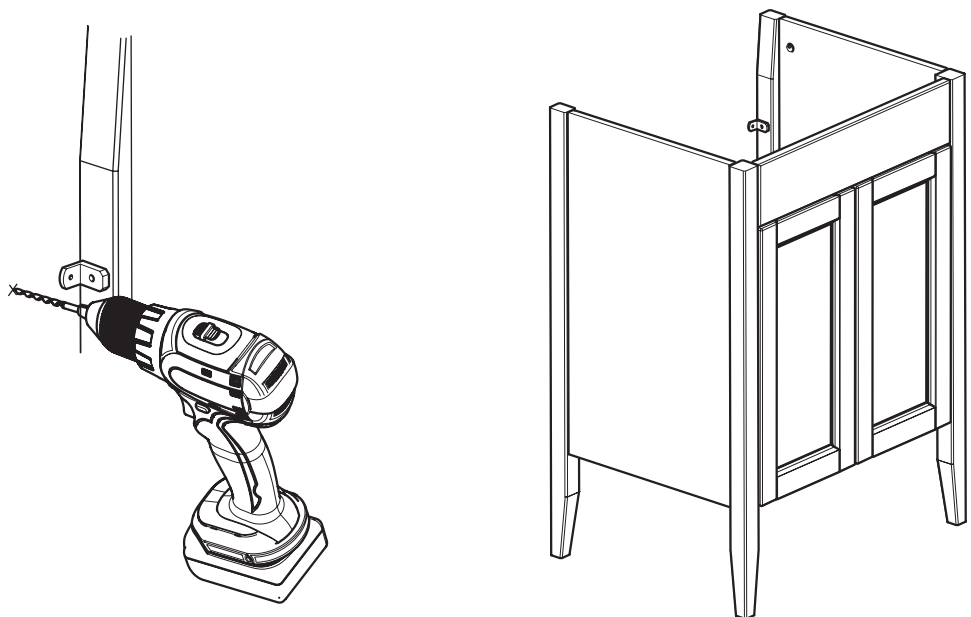
Installation of Vanity Units

1



This unit may be fixed to the wall using angled brackets (Not Supplied). Hold the cabinet in the required location and with a pencil, mark the wall and unit through the holes in the angled brackets. It is best to install the angled brackets on the inside of the freestanding furniture.

2

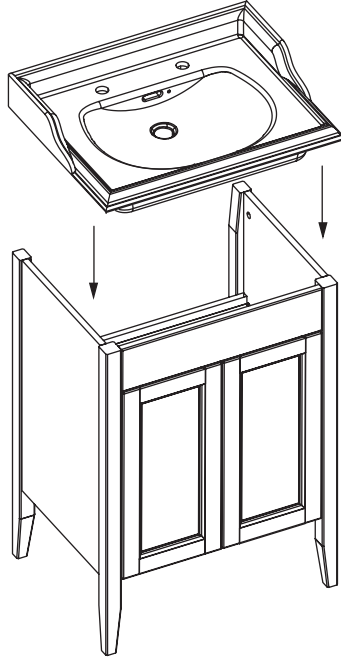


Remove the cabinet and drill holes of the appropriate size to accept the necessary screws or wall plugs used to secure. Lift the cabinet back into position and screw to the wall.

Be very cautious to use screws which are shorter length than the thickness of the wood on the freestanding furniture otherwise you may drill through the unit by mistake and cause irreparable damage.

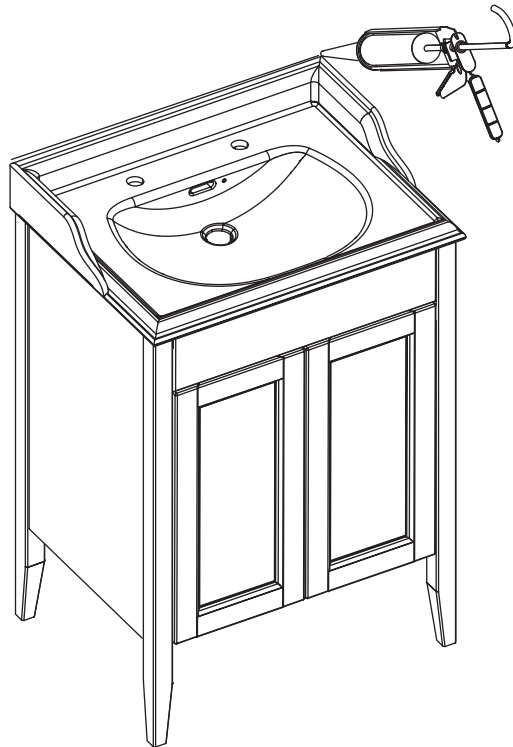
Installation of Vanity Units

3



Locate the basin so it is evenly flush with the edges and firmly against the rear wall. Fasten basin to the wall using screws (not supplied) or bolts (supplied). The holes for these can be seen on the rear of the basin.

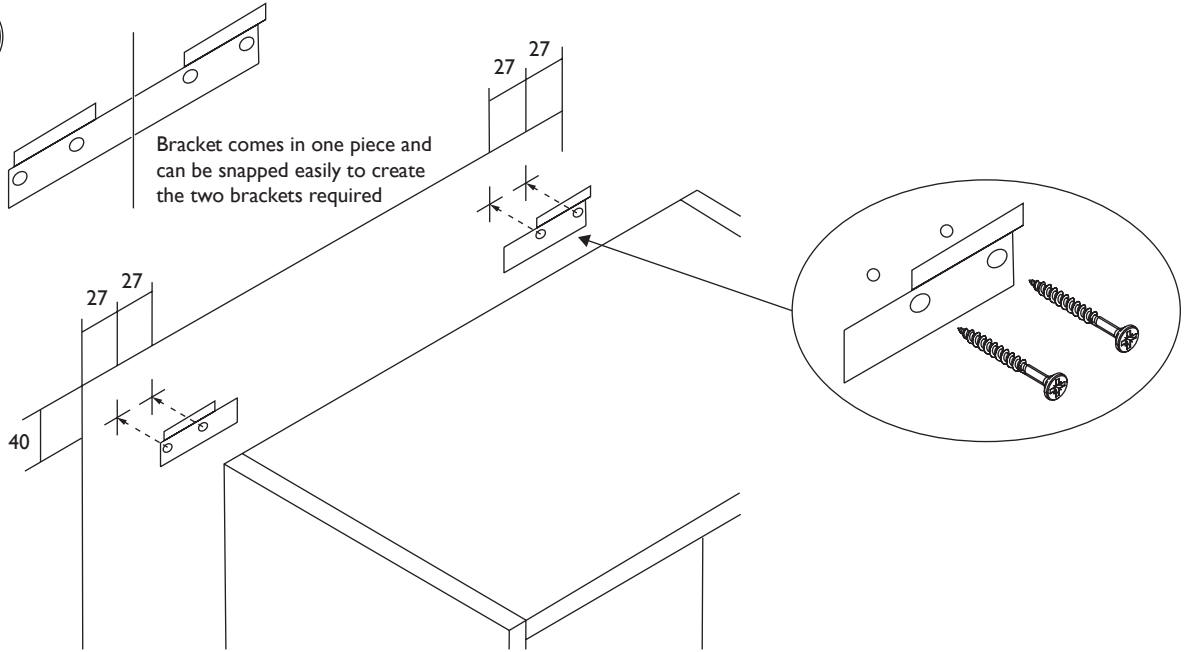
4



Use silicon sealant where necessary to ensure the basin edges are sealed and water tight to the furniture and wall. Refer to any instructions provided with handles when fitting to the doors.

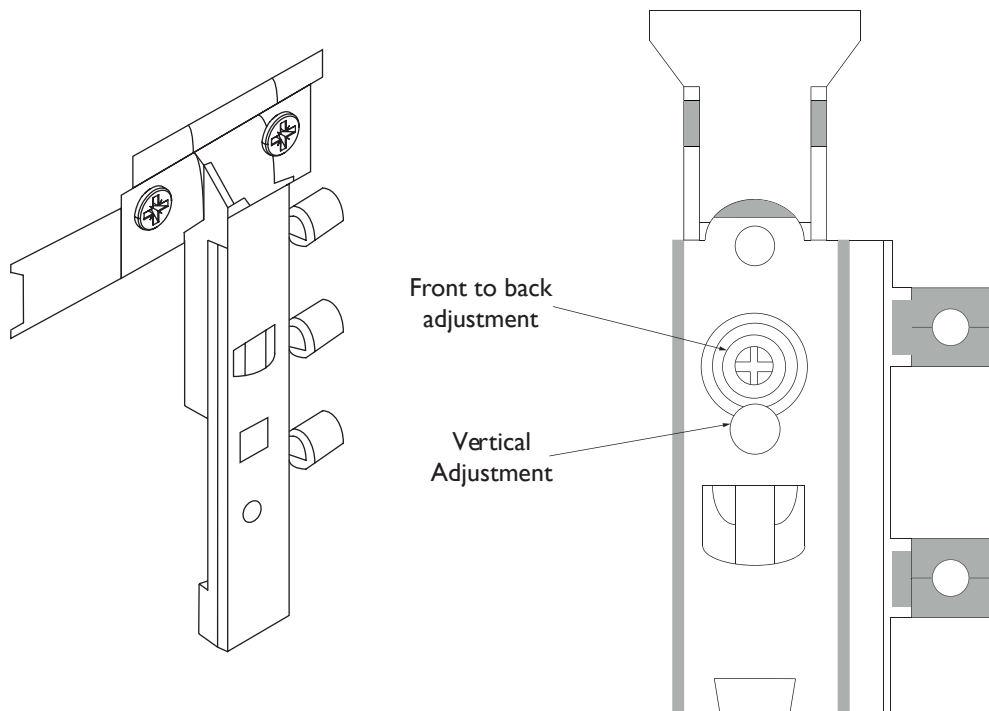
Installation of Wall Cabinets

1



Wall Units are hung on adjustable wall hanging brackets. The brackets are supplied with wall hanging plates, which should be secured to the wall with suitable wall fixings.

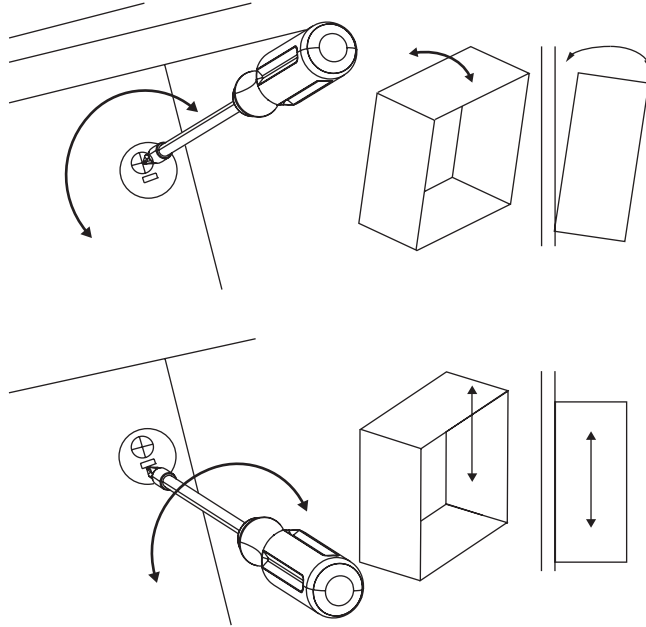
2



The hanging plate drilling positions are shown above.

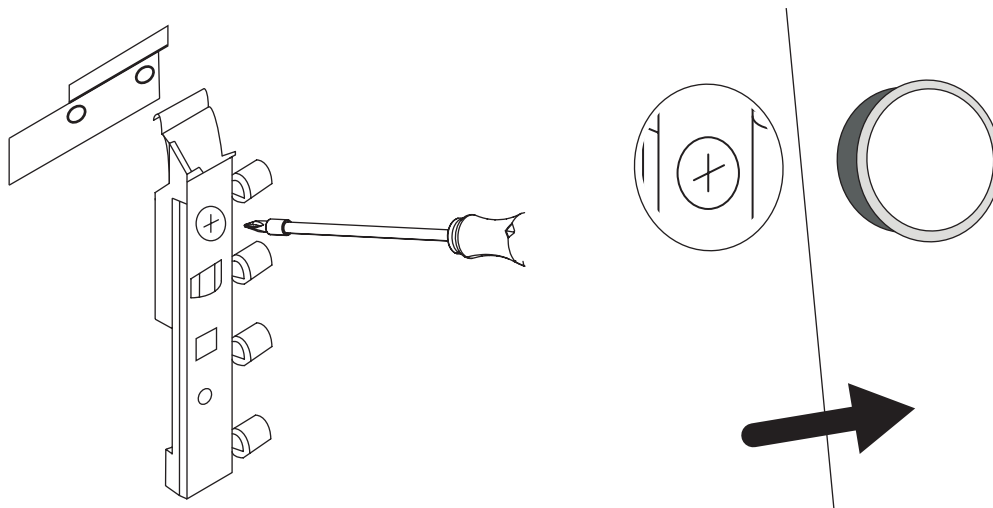
Installation of Wall Cabinets

3



Turn the top adjustment screw to adjust the unit from front to back. Allows unit to tilt forwards or backwards from the wall. Insert screwdriver into hole below the top screw and turn to move unit up and down, adjust unit for height. By adjusting at both sides the unit can be levelled.

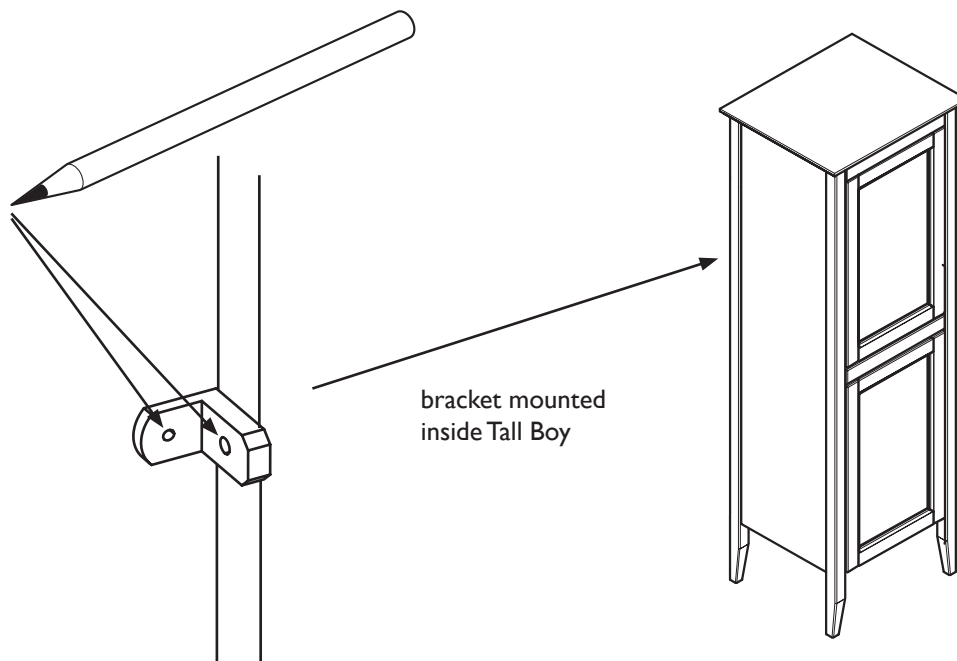
4



Once adjustment has been completed, the covering cap can be pressed on, to conceal the hole.

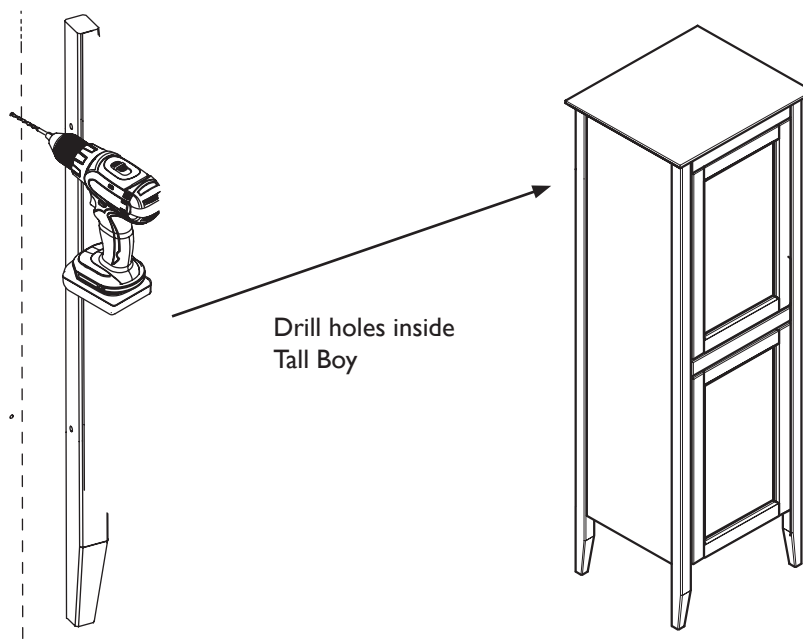
Installation of Tall Boy Units or Small Storage Units

1



Tall boy units can be attached to the wall in the same way as Freestanding Vanity Units, by using angled brackets. It is best to install angled brackets on the inside of the freestanding furniture.

2



Remove the tall boy cabinet and drill holes of the appropriate size to accept the necessary screws or wall plugs used to secure. Lift the tall boy cabinet back into position and screw to the wall.

Be very cautious to use screws which are shorter length than the thickness of the wood on the freestanding furniture otherwise you may drill through the unit by mistake and cause irreparable damage.

Caring for your product

Your fitting has a high quality finish and should be treated with care to preserve the visible surface.

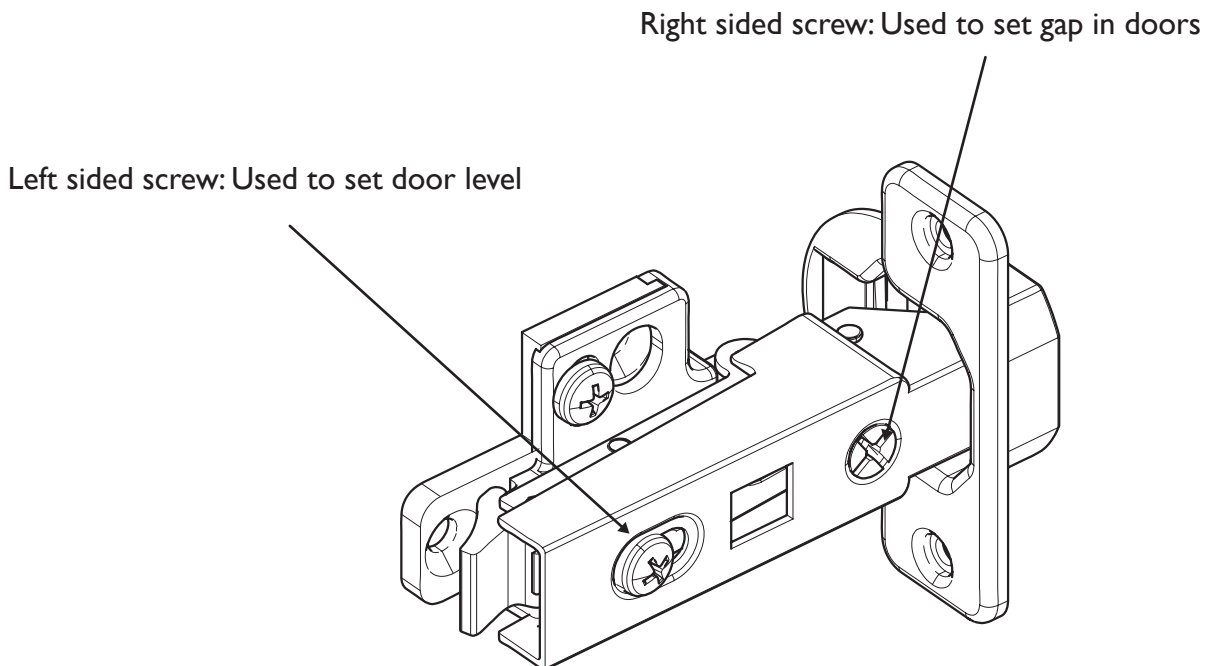
A few tips for preventing defects from forming:

Occasionally wipe the surface with a soft damp cloth and dry with a soft dry cloth.

Do not use any abrasive cleaning agents or materials, these will change the surface condition from the standard finish.

Adjustment of doors

All hinges for the cabinets are already installed but may need adjustment to line up the door to the frame.



Hinge not identical to supplied but has same operational adjustments

Heritage Bathrooms Guarantee

When you buy a Heritage product, you can be confident that it not only features distinctive design, but that it has also been made to meet our rigorous quality standards.

We offer robust guarantees and an attentive aftercare service to ensure that if you do experience any issues, we can deal with a problem quickly, and effectively.

Please note that guarantees are only valid with proof of purchase.

Our guarantees are as follows:

 <p>2 YEAR GUARANTEE</p>	Mirrors & WC Seats
---	-----------------------

 <p>5 YEAR GUARANTEE</p>	Bath screens, Furniture, Shower Valves, Taps, Wastes & Accessories
---	---

 <p>LIFETIME GUARANTEE</p>	Lifetime Guarantee on Acrylic & Cast Iron Baths and Sanitaryware
--	---

Register now for additional peace of mind

Register your product with us now and, if you do have any queries after installation, we'll be able to quickly identify the product and give you the best advice. It also means that you won't have to keep your proof of purchase to validate your guarantee. To register, simply go online at www.heritagebathrooms.com/register

Guarantee Terms and Conditions

This guarantee is in addition to your statutory and other legal rights and is subject to the following conditions:

The product was purchased within the United Kingdom or Republic of Ireland

The product is used in domestic applications only

The guarantee applies solely to the original purchaser with proof of purchase

The installation must allow ready access to all products for the purpose of inspection, maintenance or replacement

Repair under this guarantee does not extend the original expiry date. The guarantee on any replacement parts or product ends at the original expiry date

Any part found to be defective during the guarantee period will be replaced without charge, providing that the product has been installed in accordance with the instructions given in this guide and used as the manufacturer intended. If the product is no longer available, Heritage will endeavour to provide the nearest equivalent.

Heritage Bathrooms Guarantee



The guarantee does not cover:

- Damage or defects caused by
 - General wear and tear (including special non-chrome finishes; components such as filters, seals, 'O' rings and washers)
 - Incorrect installation
 - Repair using non-Heritage parts
 - Accidental or wilful misuse
 - Corrosion and the use of inappropriate cleaning products.
 - System debris including the build-up of limescale (which can be controlled through regular servicing and maintenance)
- Compensation for loss of use of the product or consequential loss of any kind.

In the interests of continuous product improvement, Heritage reserves the right to alter product specifications without notice.

Need help?



In the unlikely event that you encounter a problem with your Heritage product, you must, in the first instance, contact the retailer you purchased it from. They will advise as to whether it is due to a manufacturing fault or an installation fault. If the problem is due to a manufacturing fault, they will contact us to arrange a supply of a replacement product as soon as possible. To speak to a Heritage customer service advisor, please contact our technical helpline on **0330 026 8503**.



HERITAGE[®]

BATHROOMS

Contact Details



Heritage Bathrooms
Birch Coppice Business Park
Dordon
Tamworth
B78 1SG

Website: www.heritagebathrooms.com
Customer Services Telephone: 0330 026 8503
Email: technical@heritagebathrooms.com