

### FEATURES

- Heritage Logo
- Slip resistant flooring
- 5-8mm Acrylic Sheet
- Pre-fitted Feet, Door, Front & End Panels
- No Tap holes
- 5 Year Guarantee



Left hand version depicted

Logo as it appears on product: HERITAGE

### FINISHES AVAILABLE

White BWIW#00

### HERITAGE RECOMMENDS

Java Thermostatic Bath Shower Mixer TJC02  
(not included)

### INCLUDED COMPONENTS

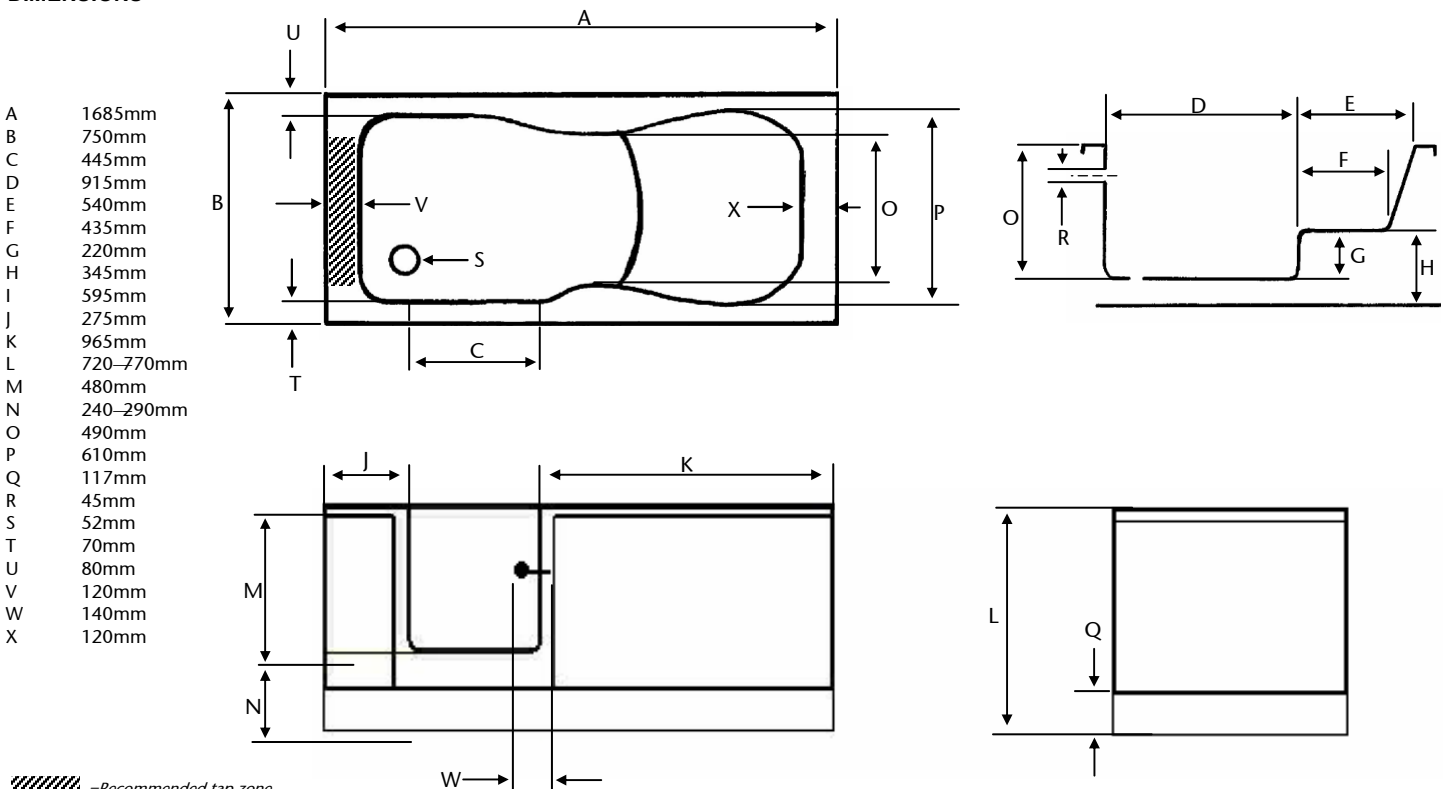
Bath (Left Hand) BWIWL00  
Bath (Right Hand) BWIWR00  
Packed Weight 95kgs  
Packed Size 1810 x 850 x 920mm

### PRODUCT DETAILS

Solid Construction  
20mm box section powder coated steel frame.  
5mm GRP construction with 8mm thickness in higher stress areas.  
Fully Encapsulated boards under base and seat.  
Bath supplied with front & end panels with self adjusting plinth.  
6 adjustable feet.  
Pop up waste included.  
Water Capacity 240 litres  
Water Usage Approx 170 litres

*Ensure lever taps can be fully operated in the desired location before drilling holes in the bath*

### DIMENSIONS



### FEATURES

- Heritage Logo
- Slip resistant bath floor
- 6 jets
- Push Button Operated
- Pre-fitted Feet, Door, Front & End Panels
- No Tap holes
- 5 Year Guarantee



Left hand non whirlpool version depicted

Logo as it appears on product: HERITAGE

### FINISHES AVAILABLE

White WBWIW#00

### INCLUDED COMPONENTS

Bath (Left Hand) WBWIWL00  
 Bath (Right Hand) WBWIWR00  
 Packed Weight 105kgs  
 Packed Size 1810 x 850 x 920mm

### HERITAGE RECOMMENDS

Java Thermostatic Bath Shower Mixer TJC02  
*(not included)*

### PRODUCT DETAILS

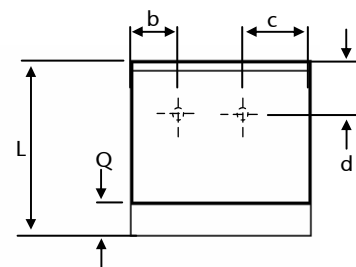
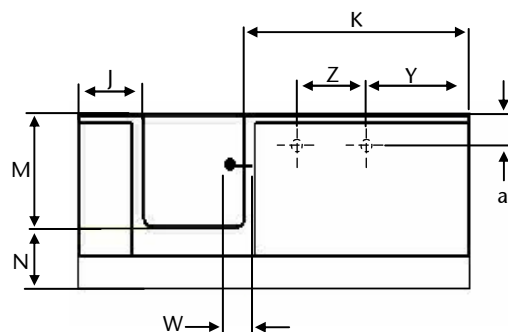
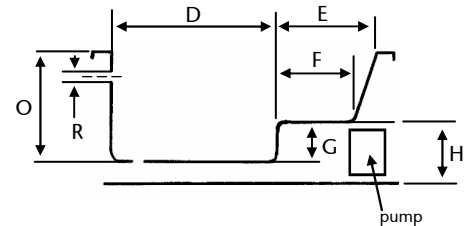
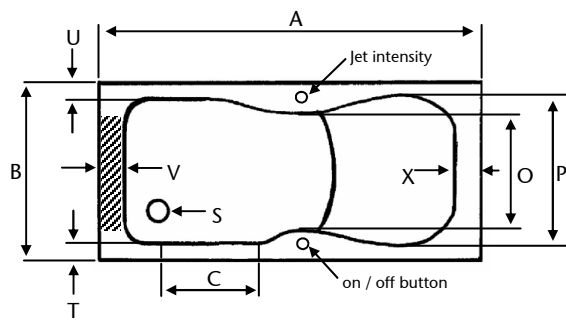
Solid Construction  
 20mm box section powder coated steel frame.  
 5mm GRP construction with 8mm thickness in higher stress areas.  
 Fully Encapsulated boards under base and seat.  
 Bath supplied with front & end panels with self adjusting plinth.  
 6 adjustable feet.  
 Pop up waste included.  
 Directional jets to target specific body areas.  
 Jets positions: set of 2 either side of seat & 2 at tap end.  
 Jet Intensity can be adjusted by turning control clockwise / anti-clockwise.  
 Whirlpool includes dry run cut out feature & will not start until adequate water level covers the jets.

Water Capacity 240 litres  
 Water Usage Approx 170 litres  
 Max Pump Delivery 100-320l/min  
 Power 230V

*Ensure lever taps can be fully operated in the desired location before drilling holes in the bath*

### DIMENSIONS

- A 1685mm
- B 750mm
- C 445mm
- D 915mm
- E 540mm
- F 435mm
- G 220mm
- H 345mm
- I 595mm
- J 275mm
- K 965mm
- L 720-770mm
- M 480mm
- N 240-290mm
- O 490mm
- P 610mm
- Q 117mm
- R 45mm
- S 52mm
- T 70mm
- U 80mm
- V 120mm
- W 140mm
- X 120mm
- Y 450mm
- Z 365mm
- a 200mm
- b 250mm
- c 270mm
- d 320mm



=Recommended tap zone